



**December  
Quarter 1994**

**Tourist  
Accommodation  
Queensland**

**Catalogue No. 8635.3**



## TOURIST ACCOMMODATION, QUEENSLAND, DECEMBER QUARTER 1994

\*\*\*\*\*

### MAIN FEATURES

DECEMBER QUARTER 1994  
COMPARED WITH  
DECEMBER QUARTER 1993

#### HOTELS, MOTELS AND GUEST HOUSES

- Rooms available increased by 1.6 per cent from 40,125 to 40,760 and bed spaces increased by 2.5 per cent to 124,631.
- Room nights occupied increased by 4.1 per cent from 2,310,717 to 2,405,437 overall with licensed hotels recording an increase of 3.7 per cent and motels and guest houses an increase of 4.5 per cent.
- The room occupancy rate overall rose from 62.6 per cent to 64.2 per cent, with Gold Coast City, Cairns City and Brisbane City recording 76.2 per cent, 76.0 per cent and 75.0 per cent, respectively. For five star rated establishments, the room occupancy rate was 81.2 per cent compared with 72.3 per cent for four star rated establishments and 65.6 per cent for three star rated establishments.
- Guest nights increased by 3.8 per cent from 4,317,962 to 4,484,046 and the bed occupancy rate increased from 38.6 per cent to 39.1 per cent.
- Guest arrivals increased by 4.1 per cent from 1,796,937 to 1,870,429 while the average length of stay was unchanged at 2.4 days. Average length of stay decreased for five star rated establishments from 3.1 days to 2.7 days but increased for four star rated establishments from 2.8 days to 2.9 days.
- Takings from accommodation increased by 10.8 per cent from \$203.4m to \$225.3m while average takings per room night occupied increased from \$88 to \$94.

#### HOLIDAY FLATS, UNITS AND HOUSES

- The number of units, etc. available for short-term letting increased by 8.6 per cent from 16,608 to 18,030 while unit nights occupied increased by 9.2 per cent from 901,951 to 985,128.
- The unit occupancy rate increased marginally from 59.1 per cent to 59.5 per cent.
- Unit lettings increased by 13.4 per cent from 147,452 to 167,280 but average length of stay decreased from 6.1 days to 5.9 days.
- Accommodation takings increased by 20.2 per cent from \$54.1m to \$65.0m and the average takings per unit night occupied increased from \$60 to \$66.

#### CARAVAN PARKS

- Capacity available decreased by 1.5 per cent from 55,682 to 54,832 powered and unpowered sites and cabins, etc. while site nights occupied decreased by 0.1 per cent from 2,224,484 to 2,222,766.
- The site occupancy rate increased from 43.4 per cent to 44.1 per cent.
- Long-term residents occupied 16,126 sites, etc. (29.4 per cent), while 1,203 sites (2.2 per cent) were permanently reserved but only casually occupied by their tenants and an average of 6,832 sites (12.5 per cent) were occupied by other short-term guests.
- Takings from accommodation rose by 3.5 per cent from \$22.9m to \$23.7m.

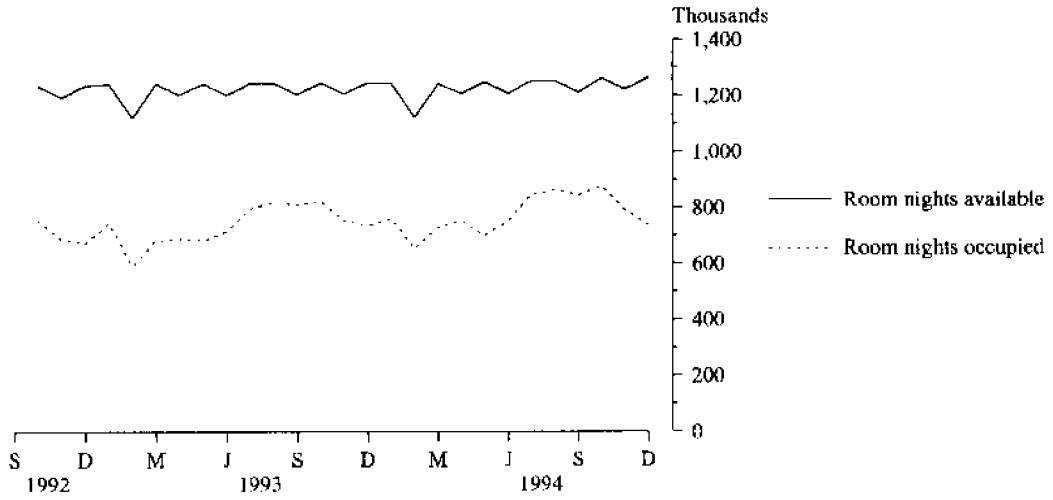
#### VISITOR HOSTELS

- Bed spaces available increased by 1.5 per cent from 7,863 to 7,978 while guest nights sold increased by 4.0 per cent from 339,234 to 352,680.
- The bed occupancy rate increased from 47.1 per cent to 48.1 per cent.
- Guest arrivals increased by 1.9 per cent from 124,599 to 126,929 while average length of stay increased from 2.7 days to 2.8 days.
- Accommodation takings increased by 15.1 per cent from \$3.8m to \$4.4m with average takings per guest night at \$12.

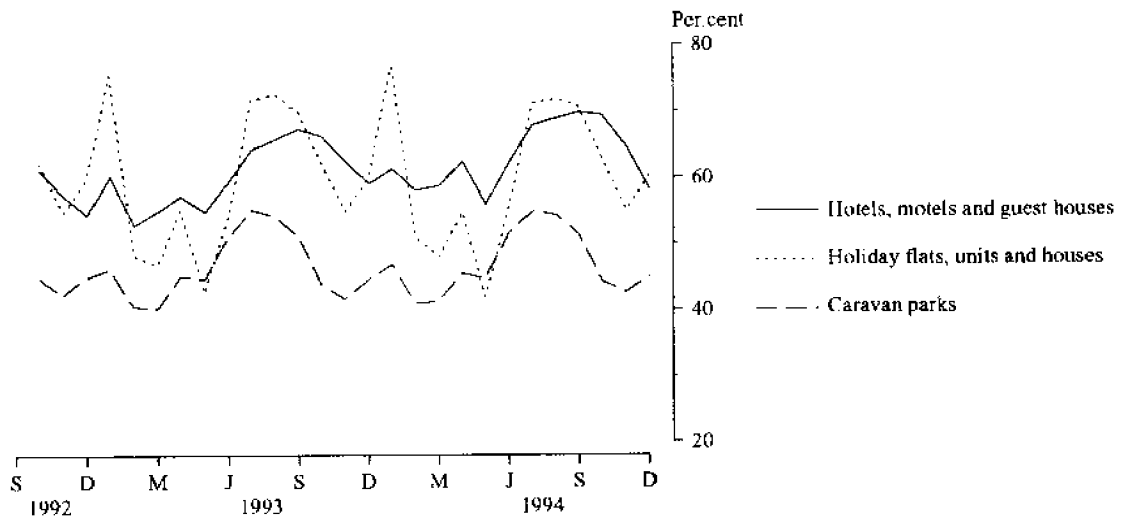
\*\*\*\*\*  
INQUIRIES

- *for further information about statistics in this publication and the availability of related unpublished statistics, contact Greg McNamara on 008 077285 or any ABS office.*
  - *for information about other ABS statistics and services, refer to the back page of this publication.*
- \*\*\*\*\*

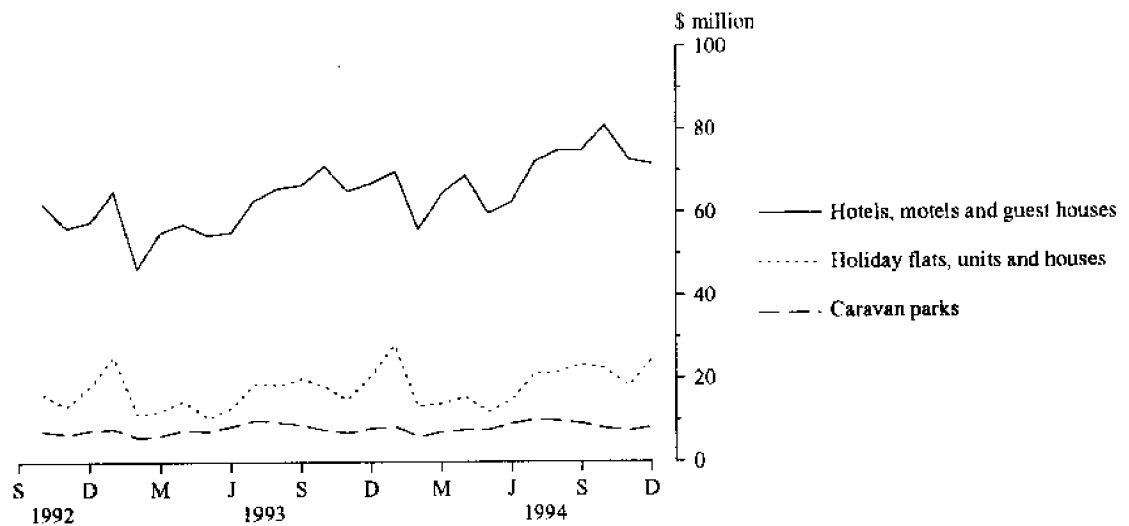
**MONTHLY ROOM NIGHTS AVAILABLE AND OCCUPIED:  
HOTELS, MOTELS AND GUEST HOUSES,  
QUEENSLAND**



**MONTHLY OCCUPANCY RATES,  
QUEENSLAND**



**MONTHLY TAKINGS FROM ACCOMMODATION,  
QUEENSLAND**



## CONTENTS

<i>Table</i>	<i>Page</i>
.. Main features	1
.. Diagrams	2
1 Summary of hotels, motels and guest houses with facilities, Queensland	4
2 Summary of caravan parks, Queensland	5
3 Summary of holiday flats, units and houses, Queensland	6
4 Summary of visitor hostels, Queensland	6
5 Hotels, motels and guest houses with facilities by star grading, Queensland	7
6 Hotels, motels and guest houses with facilities by statistical division, Queensland	8
7 Hotels, motels and guest houses with facilities: Statistical divisions and selected subdivisions and statistical local areas, Queensland	12
8 Holiday flats, units and houses by statistical division, Queensland	16
9 Holiday flats, units and houses: Statistical divisions and selected subdivisions and statistical local areas, Queensland	18
10 Caravan parks by statistical division, Queensland	20
11 Caravan parks: Statistical divisions and selected subdivisions and statistical local areas, Queensland	24
12 Visitor hostels by statistical division, Queensland	28
.. Explanatory Notes	29
.. Time series statistics available	33
.. Reference maps – statistical divisions and local government areas of Queensland	35

TABLE 1 — SUMMARY OF HOTELS, MOTELS AND GUEST HOUSES WITH FACILITIES, QUEENSLAND (a)

Particulars	Unit	Quarter ended				Year ended			
		September 1993	December 1993	March 1994	June 1994	September 1994	December 1994	December 1993	December 1994
<b>LICENSED HOTELS WITH FACILITIES</b>									
Establishments	No.	276	262	258	265	264	263	..	..
Guest rooms	No.	17,968	17,917	17,914	18,028	18,194	18,207	..	..
Bed spaces	No.	53,271	53,013	53,344	53,940	54,602	54,952	..	..
Employment (persons)	No.	20,346	21,104	20,456	20,409	21,133	21,835	..	..
Room nights occupied	No.	1,066,265	1,122,871	1,028,503	1,016,954	1,165,651	1,164,730	4,074,972	4,375,838
Room occupancy rate	per cent	64.5	68.1	63.8	62.0	69.9	69.5	62.3	66.4
Guest nights	No.	1,967,630	2,086,779	1,943,909	1,869,013	2,204,653	2,166,646	7,479,231	8,184,221
Bed occupancy rate	per cent	40.1	42.8	40.5	38.1	44.0	42.9	38.6	41.4
Guest arrivals	No.	649,671	730,049	686,634	664,482	770,122	749,433	2,538,756	2,870,671
Average length of stay	days	3.0	2.9	2.8	2.8	2.9	2.9	2.9	2.9
Takings from accommodation	\$'000	113,608	129,142	119,446	117,679	134,644	144,092	445,082	515,861
<b>MOTELS AND GUEST HOUSES WITH FACILITIES</b>									
Establishments	No.	840	836	835	836	831	838	..	..
Guest rooms	No.	22,056	22,208	22,148	22,183	22,188	22,553	..	..
Bed spaces	No.	68,210	68,551	68,414	68,533	68,284	69,679	..	..
Employment (persons)	No.	8,373	8,417	8,310	8,431	8,749	8,758	..	..
Room nights occupied	No.	1,353,128	1,187,846	1,112,294	1,184,899	1,389,799	1,240,707	4,744,345	4,927,699
Room occupancy rate	per cent	66.8	58.2	55.9	58.7	68.1	59.9	58.9	60.7
Guest nights	No.	2,557,788	2,231,183	2,123,096	2,180,046	2,615,715	2,317,400	8,924,046	9,236,257
Bed occupancy rate	per cent	40.8	35.4	34.5	35.0	41.6	36.2	35.8	36.9
Guest arrivals	No.	1,238,728	1,066,888	990,513	1,068,182	1,270,482	1,120,996	4,272,376	4,450,173
Average length of stay	days	2.1	2.1	2.1	2.0	2.1	2.1	2.1	2.1
Takings from accommodation	\$'000	81,890	74,229	71,158	72,797	87,914	81,240	288,165	313,111
<b>TOTAL HOTELS, MOTELS AND GUEST HOUSES WITH FACILITIES</b>									
Establishments	No.	1,116	1,098	1,093	1,101	1,095	1,101	..	..
Guest rooms	No.	40,024	40,125	40,062	40,211	40,382	40,760	..	..
Bed spaces	No.	121,481	121,564	121,758	122,473	122,886	124,631	..	..
Employment (persons)	No.	28,719	29,521	28,766	28,840	29,882	30,593	..	..
Room nights occupied	No.	2,419,393	2,310,717	2,140,797	2,201,853	2,555,450	2,405,437	8,819,317	9,303,537
Room occupancy rate	per cent	65.7	62.6	59.4	60.2	68.9	64.2	60.4	63.2
Guest nights	No.	4,525,418	4,317,962	4,067,005	4,049,059	4,820,368	4,484,046	16,403,277	17,420,478
Bed occupancy rate	per cent	40.5	38.6	37.2	36.3	42.7	39.1	37.0	38.9
Guest arrivals	No.	1,888,399	1,796,937	1,677,147	1,732,664	2,040,604	1,870,429	6,811,132	7,320,844
Average length of stay	days	2.4	2.4	2.4	2.3	2.4	2.4	2.4	2.4
Takings from accommodation	\$'000	195,498	203,370	190,605	190,476	222,559	225,332	733,247	828,971

(a) From December quarter 1993, establishments with fewer than 5 rooms have been formally excluded from the scope of this collection. See Explanatory Note 2 (page 29).

TABLE 2 — SUMMARY OF CARAVAN PARKS, QUEENSLAND

Particulars	Quarter ended						Year ended		
	Unit	September 1993	December 1993	March 1994	June 1994	September 1994	December 1994	December 1993	December 1994
<b>SHORT-TERM CARAVAN PARKS</b>									
Establishments	No.	226	231	232	238	239	238	..	..
Capacity									
On-site vans	No.	1,094	1,080	1,062	1,065	1,053	1,058	..	..
Other powered sites	No.	10,623	10,792	10,831	11,040	10,738	10,798	..	..
Unpowered sites	No.	8,304	8,390	8,261	8,268	7,895	7,936	..	..
Cabins, etc.	No.	1,204	1,207	1,243	1,266	1,303	1,313	..	..
<i>Total capacity</i>	<i>No.</i>	<i>21,225</i>	<i>21,469</i>	<i>21,397</i>	<i>21,639</i>	<i>20,989</i>	<i>21,105</i>	..	..
Sites occupied by long-term guests	No.	1,789	1,752	1,769	1,821	1,812	1,744	..	..
Other sites permanently reserved	No.	691	684	675	755	850	723	..	..
Employment (persons)	No.	794	811	806	866	896	888	..	..
Site nights occupied	No.	869,992	565,353	527,427	664,321	878,827	576,180	2,561,535	2,646,755
Site occupancy rate	per cent	44.6	28.7	27.5	33.9	45.6	29.7	32.9	34.2
Takings from accommodation	\$'000	10,295	6,953	6,285	7,971	11,012	7,221	30,467	32,488
<b>LONG-TERM CARAVAN PARKS</b>									
Establishments	No.	400	398	397	393	393	393	..	..
Capacity									
On-site vans	No.	4,736	4,728	4,763	4,775	4,745	4,704	..	..
Other powered sites	No.	21,991	21,835	21,424	21,305	21,436	21,644	..	..
Unpowered sites	No.	5,546	5,413	5,162	5,109	5,040	4,975	..	..
Cabins, etc.	No.	2,267	2,237	2,308	2,331	2,359	2,404	..	..
<i>Total capacity</i>	<i>No.</i>	<i>34,540</i>	<i>34,213</i>	<i>33,657</i>	<i>33,520</i>	<i>33,580</i>	<i>33,727</i>	..	..
Sites occupied by long-term guests	No.	15,348	14,687	14,659	14,923	14,886	14,382	..	..
Other sites permanently reserved	No.	552	502	497	456	513	480	..	..
Employment (persons)	No.	1,392	1,372	1,458	1,380	1,373	1,368	..	..
Site nights occupied	No.	1,870,442	1,659,131	1,607,555	1,704,073	1,807,303	1,646,586	6,877,066	6,765,517
Site occupancy rate	per cent	58.9	52.7	53.1	55.9	58.5	53.1	55.1	55.1
Takings from accommodation	\$'000	18,219	15,979	15,594	16,655	18,393	16,504	65,196	67,145
<b>TOTAL CARAVAN PARKS</b>									
Establishments	No.	626	629	629	631	632	631	..	..
Capacity									
On-site vans	No.	5,830	5,808	5,825	5,840	5,798	5,762	..	..
Other powered sites	No.	32,614	32,627	32,255	32,345	32,174	32,442	..	..
Unpowered sites	No.	13,850	13,803	13,423	13,377	12,935	12,911	..	..
Cabins, etc.	No.	3,471	3,444	3,551	3,597	3,662	3,717	..	..
<i>Total capacity</i>	<i>No.</i>	<i>55,765</i>	<i>55,682</i>	<i>55,054</i>	<i>55,159</i>	<i>54,569</i>	<i>54,832</i>	..	..
Sites occupied by long-term guests	No.	17,137	16,439	16,428	16,744	16,698	16,126	..	..
Other sites permanently reserved	No.	1,243	1,186	1,172	1,211	1,363	1,203	..	..
Employment (persons)	No.	2,186	2,183	2,264	2,246	2,269	2,256	..	..
Site nights occupied	No.	2,740,434	2,224,484	2,134,982	2,368,394	2,686,130	2,222,766	9,438,601	9,412,272
Site occupancy rate	per cent	53.5	43.4	43.1	47.3	53.5	44.1	46.6	47.0
Takings from accommodation	\$'000	28,515	22,931	21,878	24,626	29,404	23,725	95,663	99,633

TABLE 3 — SUMMARY OF HOLIDAY FLATS, UNITS AND HOUSES, QUEENSLAND

Particulars	Unit	Quarter ended				Year ended			
		September 1993	December 1993	March 1994	June 1994	September 1994	December 1994	December 1993	December 1994
Letting entities	No.	594	611	605	619	632	651	..	..
Flats, units and houses									
Single bedroom	No.	3,405	3,512	3,497	3,423	3,560	3,561	..	..
Multiple bedroom	No.	12,809	13,096	12,824	13,249	13,865	14,469	..	..
Total flats, units and houses	No.	16,214	16,608	16,321	16,672	17,425	18,030	..	..
Bed spaces	No.	65,054	66,574	65,990	67,723	70,544	73,510	..	..
Employment (persons) (a)	No.	2,031	2,160	2,125	2,185	2,325	2,435	..	..
Unit nights occupied	No.	1,062,658	901,951	862,883	767,957	1,137,951	985,128	3,502,066	3,753,919
Unit occupancy rate	per cent	71.3	59.1	58.8	50.7	71.2	59.5	59.6	60.2
Unit lettings	No.	149,742	147,452	134,177	127,802	163,216	167,280	538,893	592,475
Average length of stay	days	7.1	6.1	6.4	6.0	7.0	5.9	6.5	6.3
Takings from accommodation	\$'000	57,485	54,078	55,714	42,801	66,634	65,020	199,273	230,170

(a) Employment numbers exclude real estate agents and their employees.

TABLE 4 — SUMMARY OF VISITOR HOSTELS, QUEENSLAND

Particulars	Unit	Quarter ended				Year ended			
		September 1993	December 1993	March 1994	June 1994	September 1994	December 1994	December 1993	December 1994
Establishments	No.	121	118	122	116	116	118	..	..
Bed spaces	No.	8,000	7,863	8,233	7,822	7,791	7,978	..	..
Employment (persons)	No.	552	543	550	543	554	585	..	..
Guest nights	No.	400,057	339,234	339,321	341,404	380,506	352,680	1,386,860	1,413,911
Bed occupancy rate	per cent	54.4	47.1	46.3	48.0	53.1	48.1	48.7	48.8
Guest arrivals	No.	156,127	124,599	135,787	125,871	138,586	126,929	521,749	527,173
Average length of stay	days	2.6	2.7	2.5	2.7	2.7	2.8	2.7	2.7
Takings from accommodation	\$'000	4,542	3,782	3,871	3,866	4,554	4,352	15,746	16,643



TABLE 5 — HOTELS, MOTELS AND GUEST HOUSES WITH FACILITIES BY STAR GRADING, QUEENSLAND

Particulars	Star grading					Ungraded	Total
	1	2	3	4	5		
ESTABLISHMENTS, CAPACITY AND EMPLOYMENT							
<i>December quarter 1993—</i>							
Establishments	20	457	393	54	18	156	1,098
Guest rooms	300	8,550	14,930	7,803	5,533	3,009	40,125
Bed spaces	867	25,681	45,489	24,956	15,746	8,825	121,564
Employment (persons)	139	3,908	7,848	6,192	9,109	2,325	29,521
<i>December quarter 1994</i>							
Establishments	15	418	420	55	15	178	1,101
Guest rooms	228	7,611	15,981	8,276	4,351	4,313	40,760
Bed spaces	583	23,062	48,986	26,994	12,588	12,418	124,631
Employment (persons)	102	3,391	8,739	9,087	6,099	3,175	30,593
ROOM NIGHTS OCCUPIED							
<i>December quarter 1993</i>	10,731	401,852	854,659	511,736	397,297	134,442	2,310,717
<i>1994—</i>							
October	2,811	131,188	355,179	199,332	114,430	74,690	877,630
November	2,782	115,420	317,819	180,426	108,247	66,577	791,271
December	2,824	107,826	290,722	169,623	102,319	63,222	736,536
<i>December quarter 1994</i>	8,417	354,434	963,720	549,381	324,996	204,489	2,405,437
ROOM OCCUPANCY RATES (per cent)							
<i>December quarter 1993</i>	38.9	51.1	62.3	71.3	78.0	48.8	62.6
<i>1994—</i>							
October	39.8	55.6	71.8	77.9	84.8	56.0	69.5
November	40.7	50.5	66.3	72.9	82.9	51.5	64.8
December	40.0	45.7	58.7	66.2	75.9	47.3	58.3
<i>December quarter 1994</i>	40.1	50.6	65.6	72.3	81.2	51.6	64.2
GUEST NIGHTS							
<i>December quarter 1993</i>	18,287	732,253	1,601,211	984,650	728,806	252,755	4,317,962
<i>1994—</i>							
October	4,571	234,043	655,084	377,945	198,641	141,734	1,612,018
November	4,302	196,111	567,725	331,869	187,645	122,467	1,410,119
December	4,806	206,538	590,026	340,719	196,254	123,566	1,461,909
<i>December quarter 1994</i>	13,679	636,692	1,812,835	1,050,533	582,540	387,767	4,484,046
BED OCCUPANCY RATES (per cent)							
<i>December quarter 1993</i>	22.9	31.0	38.3	42.9	50.3	31.3	38.6
<i>1994—</i>							
October	25.3	32.7	43.2	45.3	50.9	37.0	41.8
November	24.6	28.3	38.7	41.1	49.7	32.9	37.8
December	26.6	28.9	38.9	40.8	50.3	32.1	37.9
<i>December quarter 1994</i>	25.5	30.0	40.3	42.4	50.3	34.0	39.1
GUEST ARRIVALS							
<i>December quarter 1993</i>	9,403	389,510	724,136	353,752	235,507	84,629	1,796,937
<i>1994—</i>							
October	2,095	127,410	280,423	125,814	81,244	54,143	671,129
November	1,839	107,522	248,770	120,001	67,529	49,317	594,978
December	1,993	114,024	259,367	115,137	65,426	48,375	604,322
<i>December quarter 1994</i>	5,927	348,956	788,560	360,952	214,199	151,835	1,870,429
AVERAGE LENGTH OF STAY (days)							
<i>December quarter 1993</i>	1.9	1.9	2.2	2.8	3.1	3.0	2.4
<i>December quarter 1994</i>	2.3	1.8	2.3	2.9	2.7	2.6	2.4
TAKINGS FROM ACCOMMODATION (\$'000)							
<i>December quarter 1993</i>	587	18,244	61,044	52,392	61,279	9,825	203,370
<i>1994—</i>							
October	107	6,411	27,048	22,514	19,376	5,504	80,959
November	105	5,591	23,577	20,043	18,541	4,858	72,714
December	114	5,634	22,732	19,668	18,667	4,843	71,659
<i>December quarter 1994</i>	325	17,636	73,357	62,225	56,584	15,205	225,332

TABLE 6—HOTELS, MOTELS AND GUEST HOUSES WITH FACILITIES BY STATISTICAL DIVISION,  
QUEENSLAND

Particulars	Brisbane (SD)			Moreton (SD)			Wide Bay-Burnett (SD)		
	Licensed hotels	Motels, etc.	Total	Licensed hotels	Motels, etc.	Total	Licensed hotels	Motels, etc.	Total
<b>ESTABLISHMENTS, CAPACITY AND EMPLOYMENT</b>									
<i>December quarter 1993</i>									
Establishments	37	96	133	40	212	252	18	103	121
Guest rooms	2,443	3,765	6,208	5,841	5,150	10,991	531	1,832	2,363
Bed spaces	6,521	11,067	17,588	17,770	16,005	33,775	1,669	5,768	7,437
Employment (persons)	3,327	1,719	5,046	8,590	1,904	10,494	463	573	1,036
<i>December quarter 1994—</i>									
Establishments	37	97	134	38	202	240	20	102	122
Guest rooms	2,454	3,743	6,197	5,768	5,096	10,864	572	1,833	2,405
Bed spaces	6,493	11,037	17,530	18,207	15,921	34,128	1,832	5,817	7,649
Employment (persons)	3,446	1,843	5,289	8,776	1,927	10,703	485	596	1,081
<b>ROOM NIGHTS OCCUPIED</b>									
<i>December quarter 1993</i>	162,122	219,204	381,326	402,326	288,514	690,840	20,883	83,947	104,830
<i>1994—</i>									
October	61,753	91,846	153,599	139,376	102,688	242,064	9,665	32,858	42,523
November	58,287	82,088	140,375	128,142	90,830	218,972	7,823	27,709	35,532
December	52,381	71,818	124,199	135,840	94,845	230,685	7,376	26,956	34,332
<i>December quarter 1994</i>	172,421	245,752	418,173	403,358	288,363	691,721	24,864	87,523	112,387
<b>ROOM OCCUPANCY RATES (per cent)</b>									
<i>December quarter 1993</i>	72.1	63.6	67.0	74.9	60.9	68.3	42.7	49.8	48.2
<i>1994—</i>									
October	81.2	79.2	80.0	77.9	65.3	72.0	54.5	57.8	57.0
November	79.2	73.1	75.5	74.1	59.7	67.3	45.6	50.4	49.2
December	68.9	61.9	64.7	76.0	60.2	68.6	41.6	47.4	46.0
<i>December quarter 1994</i>	76.4	71.4	73.3	76.0	61.7	69.3	47.2	51.9	50.8
<b>GUEST NIGHTS</b>									
<i>December quarter 1993</i>	240,271	376,214	616,485	802,304	629,225	1,431,529	48,647	152,522	201,169
<i>1994—</i>									
October	88,820	161,034	249,854	265,764	220,515	486,279	22,302	58,138	80,440
November	80,393	132,177	212,570	243,016	194,545	437,561	18,310	45,528	63,838
December	81,074	130,330	211,404	279,638	223,302	502,940	17,670	53,403	71,073
<i>December quarter 1994</i>	250,287	423,541	673,828	788,418	638,362	1,426,780	58,282	157,069	215,351
<b>BED OCCUPANCY RATES (per cent)</b>									
<i>December quarter 1993</i>	40.0	37.1	38.2	49.1	42.7	46.1	31.7	28.7	29.4
<i>1994—</i>									
October	44.1	47.1	46.0	47.1	44.9	46.1	39.3	32.2	33.9
November	41.3	39.9	40.4	44.5	40.9	42.8	33.3	26.1	27.8
December	40.3	38.1	38.9	49.5	45.4	47.6	31.1	29.6	30.0
<i>December quarter 1994</i>	41.9	41.7	41.8	47.1	43.8	45.5	34.6	29.3	30.6
<b>GUEST ARRIVALS</b>									
<i>December quarter 1993</i>	132,344	174,919	307,263	242,719	243,334	486,053	21,689	104,652	126,341
<i>1994—</i>									
October	42,585	86,437	129,022	78,083	83,009	161,092	12,690	39,681	52,371
November	44,866	67,072	111,938	75,887	73,935	149,822	9,786	31,028	40,814
December	45,640	64,533	110,173	78,762	79,002	157,764	8,818	35,145	43,963
<i>December quarter 1994</i>	133,091	218,042	351,133	232,732	235,946	468,678	31,294	105,854	137,148
<b>AVERAGE LENGTH OF STAY (days)</b>									
<i>December quarter 1993</i>	1.8	2.2	2.0	3.3	2.6	2.9	2.2	1.5	1.6
<i>December quarter 1994</i>	1.9	1.9	1.9	3.4	2.7	3.0	1.9	1.5	1.6
<b>TAKINGS FROM ACCOMMODATION (\$'000)</b>									
<i>December quarter 1993</i>	15,015	15,195	30,210	46,772	18,963	65,735	1,375	4,144	5,519
<i>1994—</i>									
October	6,858	6,992	13,850	16,952	6,578	23,531	834	1,731	2,565
November	6,320	6,166	12,486	15,676	5,794	21,470	583	1,423	2,006
December	5,420	5,411	10,831	17,984	7,084	25,068	562	1,497	2,059
<i>December quarter 1994</i>	18,599	18,569	37,168	50,612	19,457	70,069	1,979	4,650	6,629

TABLE 6—HOTELS, MOTELS AND GUEST HOUSES WITH FACILITIES BY STATISTICAL DIVISION,  
QUEENSLAND—continued

Particulars	Darling Downs (SD)		South-West (SD)		Fitzroy (SD)		Total
	Licensed hotels	Motels, etc.	Total	Total	Licensed hotels	Motels, etc.	
ESTABLISHMENTS, CAPACITY AND EMPLOYMENT							
<i>December quarter 1993—</i>							
Establishments	20	80	100	30	32	83	115
Guest rooms	371	1,365	1,736	477	1,086	1,989	3,075
Bed spaces	992	4,270	5,262	1,289	3,184	6,110	9,294
Employment (persons)	291	458	749	154	1,151	741	1,892
<i>December quarter 1994</i>							
Establishments	20	82	102	30	31	85	116
Guest rooms	385	1,414	1,799	470	1,086	2,058	3,144
Bed spaces	1,046	4,475	5,521	1,284	3,311	6,349	9,660
Employment (persons)	308	483	791	151	1,184	753	1,937
ROOM NIGHTS OCCUPIED							
<i>December quarter 1993</i>	13,644	59,892	73,536	17,722	54,586	108,128	162,714
<i>1994—</i>							
October	4,793	23,148	27,941	6,126	20,052	42,433	62,485
November	4,434	19,995	24,429	5,398	18,124	38,548	56,672
December	4,278	19,691	23,969	4,757	17,160	32,405	49,565
<i>December quarter 1994</i>	13,505	62,834	76,339	16,281	55,336	113,386	168,722
ROOM OCCUPANCY RATES (per cent)							
<i>December quarter 1993</i>	40.0	47.7	46.0	40.4	54.6	59.2	57.6
<i>1994—</i>							
October	40.2	53.3	50.4	42.0	59.6	66.9	64.4
November	38.4	47.2	45.3	38.3	55.6	62.8	60.3
December	35.8	44.9	43.0	32.6	51.0	51.0	51.0
<i>December quarter 1994</i>	38.1	48.5	46.2	37.7	55.4	60.2	58.5
GUEST NIGHTS							
<i>December quarter 1993</i>	22,978	113,733	136,711	26,768	102,008	178,797	280,805
<i>1994—</i>							
October	7,685	42,318	50,003	9,437	35,770	68,419	104,189
November	7,162	34,765	41,927	7,477	31,478	60,001	91,479
December	7,202	39,050	46,252	7,652	36,029	60,017	96,046
<i>December quarter 1994</i>	22,049	116,133	138,182	24,566	103,277	188,437	291,714
BED OCCUPANCY RATES (per cent)							
<i>December quarter 1993</i>	25.2	29.0	28.2	22.6	34.8	31.8	32.9
<i>1994—</i>							
October	23.7	30.9	29.5	23.7	34.8	35.0	34.9
November	22.8	25.9	25.4	19.4	31.7	31.7	31.7
December	22.2	28.1	27.0	19.2	35.1	30.6	32.1
<i>December quarter 1994</i>	22.9	28.3	27.3	20.8	33.9	32.4	32.9
GUEST ARRIVALS							
<i>December quarter 1993</i>	14,836	84,122	98,958	20,825	35,618	111,129	146,747
<i>1994—</i>							
October	4,468	31,708	36,176	7,496	10,896	41,219	52,115
November	4,370	26,054	30,424	6,021	10,018	37,091	47,109
December	4,031	30,263	34,294	6,233	9,941	39,797	49,738
<i>December quarter 1994</i>	12,869	88,025	100,894	19,750	30,855	118,107	148,962
AVERAGE LENGTH OF STAY (days)							
<i>December quarter 1993</i>	1.5	1.4	1.4	1.3	2.9	1.6	1.9
<i>December quarter 1994</i>	1.7	1.3	1.4	1.2	3.3	1.6	2.0
TAKINGS FROM ACCOMMODATION (\$'000)							
<i>December quarter 1993</i>	644	3,201	3,845	818	4,709	5,853	10,563
<i>1994—</i>							
October	252	1,271	1,523	306	1,879	2,438	4,317
November	246	1,085	1,331	258	1,640	2,207	3,847
December	215	1,102	1,317	239	1,957	1,848	3,805
<i>December quarter 1994</i>	713	3,458	4,171	802	5,476	6,494	11,970

TABLE 6—HOTELS, MOTELS AND GUEST HOUSES WITH FACILITIES BY STATISTICAL DIVISION,  
QUEENSLAND—continued

Particulars	Central-West (SD)			Mackay (SD)		Northern (SD)	
	Total	Licensed hotels	Motels, etc.	Total	Licensed hotels	Motels, etc.	Total
ESTABLISHMENTS, CAPACITY AND EMPLOYMENT							
<i>December quarter 1993</i>							
Establishments	16	28	59	87	21	57	78
Guest rooms	297	2,669	1,591	4,260	782	1,824	2,606
Bed spaces	903	8,616	5,058	13,674	2,199	5,411	7,610
Employment (persons)	95	2,582	579	3,161	1,070	591	1,661
<i>December quarter 1994—</i>							
Establishments	16	28	62	90	21	57	78
Guest rooms	300	2,718	1,597	4,315	782	1,837	2,619
Bed spaces	896	8,933	5,081	14,014	2,166	5,663	7,829
Employment (persons)	135	2,680	609	3,289	1,119	554	1,673
ROOM NIGHTS OCCUPIED							
<i>December quarter 1993</i>							
	10,562	150,337	79,444	229,781	43,309	84,827	128,136
<i>1994—</i>							
October	5,269	61,469	28,138	89,607	15,414	33,629	49,043
November	4,040	56,951	27,360	84,311	14,649	29,240	43,889
December	3,405	53,624	24,720	78,344	12,002	26,943	38,945
<i>December quarter 1994</i>	12,714	172,044	80,218	252,262	42,065	89,812	131,877
ROOM OCCUPANCY RATES (per cent)							
<i>December quarter 1993</i>							
	38.7	61.2	54.3	58.6	60.2	50.6	53.4
<i>1994—</i>							
October	56.7	73.0	56.8	67.0	63.6	59.1	60.4
November	44.9	69.8	57.1	65.1	62.4	53.1	55.9
December	36.6	63.6	49.9	58.6	49.5	47.3	48.0
<i>December quarter 1994</i>	46.1	68.8	54.6	63.5	58.5	53.1	54.7
GUEST NIGHTS							
<i>December quarter 1993</i>							
	18,845	292,478	148,855	441,333	67,512	148,195	215,707
<i>1994—</i>							
October	8,823	134,105	48,340	182,445	23,033	54,127	77,160
November	6,225	120,141	45,139	165,280	21,362	48,716	70,078
December	6,011	121,234	49,857	171,091	19,049	48,981	68,030
<i>December quarter 1994</i>	21,059	375,480	143,336	518,816	63,444	151,824	215,268
BED OCCUPANCY RATES (per cent)							
<i>December quarter 1993</i>							
	22.7	36.9	32.0	35.1	33.4	29.8	30.8
<i>1994—</i>							
October	31.8	48.4	30.7	42.0	34.3	30.8	31.8
November	23.2	44.8	29.6	39.3	32.9	28.7	29.8
December	21.6	43.8	31.7	39.4	28.4	27.9	28.0
<i>December quarter 1994</i>	25.5	45.7	30.7	40.2	31.8	29.1	29.9
GUEST ARRIVALS							
<i>December quarter 1993</i>							
	13,755	83,824	72,793	156,617	41,450	82,743	124,193
<i>1994—</i>							
October	5,704	40,502	25,770	66,272	15,101	29,803	44,904
November	4,289	37,651	23,999	61,650	14,238	26,240	40,478
December	4,411	37,239	26,394	63,633	12,200	26,670	38,870
<i>December quarter 1994</i>	14,404	115,392	76,163	191,555	41,539	82,713	124,252
AVERAGE LENGTH OF STAY (days)							
<i>December quarter 1993</i>							
	1.4	3.5	2.0	2.8	1.6	1.8	1.7
<i>December quarter 1994</i>							
	1.5	3.3	1.9	2.7	1.5	1.8	1.7
TAKINGS FROM ACCOMMODATION (\$'000)							
<i>December quarter 1993</i>							
	566	20,317	4,602	24,918	3,511	4,299	7,810
<i>1994—</i>							
October	281	8,161	1,576	9,737	1,404	1,869	3,273
November	206	7,533	1,505	9,038	1,255	1,585	2,840
December	179	7,915	1,458	9,373	1,003	1,502	2,504
<i>December quarter 1994</i>	665	23,609	4,539	28,148	3,661	4,956	8,617

TABLE 6 — HOTELS, MOTELS AND GUEST HOUSES WITH FACILITIES BY STATISTICAL DIVISION,  
QUEENSLAND — continued

Particulars	Far North (SD)			North-West (SD)			Queensland		
	Licensed hotels	Motels, etc.	Total	Licensed hotels	Motels, etc.	Total	Licensed hotels	Motels, etc.	Total
ESTABLISHMENTS, CAPACITY AND EMPLOYMENT									
<i>December quarter 1993</i>									
Establishments	40	96	136	13	17	30	262	836	1,098
Guest rooms	3,801	3,728	7,529	222	361	583	17,917	22,208	40,125
Bed spaces	11,069	12,040	23,109	585	1,038	1,623	53,013	68,551	121,564
Employment (persons)	3,393	1,565	4,958	167	108	275	21,104	8,417	29,521
<i>December quarter 1994</i>									
Establishments	42	101	143	13	17	30	263	838	1,101
Guest rooms	4,057	4,001	8,058	222	367	589	18,207	22,553	40,760
Bed spaces	11,984	12,527	24,511	569	1,040	1,609	54,952	69,679	124,631
Employment (persons)	3,575	1,686	5,261	175	108	283	21,835	8,758	30,593
ROOM NIGHTS OCCUPIED									
<i>December quarter 1993</i>	261,005	223,456	484,461	9,593	17,216	26,809	1,122,871	1,187,846	2,310,717
<i>1994—</i>									
October	101,060	89,033	190,093	3,299	5,581	8,880	418,475	459,155	877,630
November	89,973	78,556	168,529	3,196	5,928	9,124	383,059	408,212	791,271
December	76,698	64,680	141,378	2,619	4,338	6,957	363,196	373,340	736,536
<i>December quarter 1994</i>	267,731	232,269	500,000	9,114	15,847	24,961	1,164,730	1,240,707	2,405,437
ROOM OCCUPANCY RATES (per cent)									
<i>December quarter 1993</i>	74.7	65.2	70.0	47.0	51.8	50.0	68.1	58.2	62.6
<i>1994</i>									
October	80.4	71.8	76.1	47.9	49.1	48.6	74.1	65.8	69.5
November	73.9	65.4	69.7	48.0	53.8	51.6	70.1	60.4	64.8
December	61.0	52.2	56.6	38.1	38.1	38.1	64.3	53.5	58.3
<i>December quarter 1994</i>	71.7	63.1	67.5	44.6	46.9	46.1	69.5	59.9	64.2
GUEST NIGHTS									
<i>December quarter 1993</i>	490,966	418,822	909,788	12,426	26,396	38,822	2,086,779	2,231,183	4,317,962
<i>1994—</i>									
October	183,731	167,497	351,228	4,036	8,124	12,160	767,426	844,592	1,612,018
November	160,307	141,285	301,592	3,763	8,329	12,092	687,804	722,315	1,410,119
December	144,746	126,437	271,183	3,168	7,059	10,227	711,416	750,493	1,461,909
<i>December quarter 1994</i>	488,784	435,219	924,003	10,967	23,512	34,479	2,166,646	2,317,400	4,484,046
BED OCCUPANCY RATES (per cent)									
<i>December quarter 1993</i>	48.3	37.8	42.8	23.1	27.6	26.0	42.8	35.4	38.6
<i>1994</i>									
October	49.5	43.1	46.2	22.9	25.2	24.4	45.0	39.2	41.8
November	44.6	37.6	41.0	22.0	26.7	25.1	41.7	34.6	37.8
December	39.0	32.6	35.7	18.0	21.9	20.5	41.8	34.8	37.9
<i>December quarter 1994</i>	44.3	37.8	41.0	21.0	24.6	23.3	42.9	36.2	39.1
GUEST ARRIVALS									
<i>December quarter 1993</i>	146,091	149,244	295,335	5,792	15,058	20,850	730,049	1,066,888	1,796,937
<i>1994—</i>									
October	51,334	57,171	108,505	2,021	5,451	7,472	259,422	411,707	671,129
November	47,455	48,225	95,680	1,795	4,958	6,753	247,581	347,397	594,978
December	42,882	46,015	88,897	1,582	4,764	6,346	242,430	361,892	604,322
<i>December quarter 1994</i>	141,671	151,411	293,082	5,398	15,173	20,571	749,433	1,120,996	1,870,429
AVERAGE LENGTH OF STAY (days)									
<i>December quarter 1993</i>	3.4	2.8	3.1	2.1	1.8	1.9	2.9	2.1	2.4
<i>December quarter 1994</i>	3.5	2.9	3.2	2.0	1.5	1.7	2.9	2.1	2.4
TAKINGS FROM ACCOMMODATION (\$'000)									
<i>December quarter 1993</i>	36,159	15,801	51,960	428	998	1,427	129,142	74,229	203,370
<i>1994—</i>									
October	14,567	6,525	21,092	147	338	485	51,124	29,835	80,959
November	13,104	5,632	18,735	150	346	497	46,568	26,146	72,714
December	11,162	4,727	15,889	132	262	394	46,400	25,259	71,659
<i>December quarter 1994</i>	38,832	16,884	55,716	429	946	1,376	144,092	81,240	225,332

TABLE 7 — HOTELS, MOTELS AND GUEST HOUSES WITH FACILITIES: STATISTICAL DIVISIONS AND

Statistical Divisions and selected Subdivisions and Statistical Local Areas					Room nights occupied			Room occupancy rates (per cent)				
	Establish- ments	Guest rooms	Bed spaces	Employ- ment (persons)	Oct.	Nov.	Dec.	Dec.			Dec. qtr	
								Oct.	Nov.	Dec.		
Ascot	4	77	227	21	1,827	1,533	1,286	4,646	76.5	66.4	53.9	65.6
Aspley	4	67	212	26	1,420	1,256	1,295	3,971	68.4	62.5	62.3	64.4
Brisbane City Core (a)												
City — Inner	7	1,245	3,201	1,135	31,952	30,603	27,811	90,366	82.8	81.9	72.1	78.9
City — Remainder	6	1,191	3,223	1,430	33,748	32,285	27,859	93,892	91.4	90.4	75.5	85.7
Kangaroo Point	9	364	1,106	221	8,360	6,878	6,966	22,204	74.1	63.0	61.7	66.3
Spring Hill	13	950	2,921	562	24,794	23,438	20,392	68,624	84.2	82.2	69.2	78.5
Balance	8	357	886	196	9,202	8,516	7,910	25,628	83.1	79.5	71.5	78.0
Licensed hotels	12	2,038	5,444	2,367	53,968	51,587	46,506	152,061	85.4	84.4	73.6	81.1
Motels and guest houses	31	2,069	5,893	1,177	54,088	50,133	44,432	148,653	84.3	80.8	69.3	78.1
Total	43	4,107	11,337	3,544	108,056	101,720	90,938	300,714	84.9	82.6	71.4	79.6
Chermside	3	85	258	31	2,156	1,420	1,208	4,784	81.8	55.7	45.8	61.2
Hamilton	10	320	986	226	8,060	6,889	5,742	20,691	81.3	71.8	57.9	70.3
Brisbane City (SSD) — Balance	43	1,066	3,071	939	23,259	20,282	16,653	60,194	70.4	63.4	50.4	61.4
Brisbane City (SSD)	107	5,722	16,091	4,787	144,778	133,100	117,122	395,000	81.6	77.5	66.0	75.0
Ipswich (C)	6	122	397	89	2,263	1,665	1,721	5,649	59.8	45.5	45.5	50.3
Logan City (SSD)	4	48	158	104	1,084	821	861	2,766	72.8	57.0	57.9	62.6
Redcliffe City (SSD)	4	97	259	47	1,556	1,464	1,538	4,558	51.7	50.3	51.1	51.1
Redland Shire (SSD)	6	91	254	140	1,671	1,576	1,376	4,623	59.2	57.7	48.8	55.2
Balance	7	117	371	122	2,247	1,749	1,581	5,577	62.0	49.8	43.6	51.8
Brisbane (SD)	134	6,197	17,530	5,289	153,599	140,375	124,199	418,173	80.0	75.5	64.7	73.3
Boonah (S)	3	26	74	10	235	269	230	734	29.2	34.5	28.5	30.7
Caloundra (C) — Parts A and B	27	467	1,459	349	6,889	6,229	6,794	19,912	47.6	44.5	46.9	46.3
Esk (S)	5	39	135	12	440	392	325	1,157	36.4	33.5	26.9	32.2
Gold Coast City (SSD)												
Bilinga	5	67	250	14	1,257	932	954	3,143	60.5	46.4	45.9	51.0
Burleigh Heads	6	159	541	48	3,218	2,889	3,112	9,219	65.3	60.6	63.1	63.0
Coolangatta	6	259	835	114	5,687	4,947	4,946	15,580	70.8	63.7	61.6	65.4
Labrador	6	83	283	21	1,863	1,562	1,640	5,065	72.4	62.7	63.7	66.3
Mermaid Beach	13	201	616	35	4,355	3,846	3,932	12,133	69.9	63.8	63.1	65.6
Miami	6	102	323	14	1,842	1,539	1,577	4,958	58.3	50.3	49.9	52.8
Palm Beach	12	151	451	41	2,335	1,979	2,183	6,497	49.9	43.7	46.6	46.8
Southport	5	185	595	87	3,352	3,094	3,862	10,308	58.4	55.7	67.3	60.6
Surfers Paradise	27	3,526	10,798	2,469	88,889	84,233	87,374	260,496	81.3	79.6	79.9	80.3
Balance	17	2,217	7,726	4,405	53,833	50,429	54,079	158,341	79.1	76.5	79.3	78.3
Licensed hotels	13	3,877	12,797	6,165	100,530	96,583	100,501	297,614	83.6	83.0	83.6	83.4
Motels and guest houses	90	3,073	9,621	1,083	66,101	58,867	63,158	188,126	69.9	64.3	66.6	67.0
Total	103	6,950	22,418	7,248	166,631	155,450	163,659	485,740	77.6	74.8	76.1	76.2
Maroochy (S) — Parts A and B	51	1,642	4,743	1,509	31,369	25,629	26,638	83,636	61.6	52.0	52.3	55.4
Noosa (S) — Parts A and B	18	537	1,712	516	13,978	12,610	11,962	38,550	84.0	78.3	71.9	78.0
Balance	33	1,203	3,587	1,059	22,522	18,393	21,077	61,992	60.4	51.0	56.5	56.0
Moreton (SD)	240	10,864	34,128	10,703	242,064	218,972	230,685	691,721	72.0	67.3	68.6	69.3
Bundaberg (C)	24	437	1,346	133	9,090	8,257	7,693	25,040	67.1	63.0	56.8	62.3
Burnett (S) — Parts A and B	9	105	458	61	1,538	1,276	1,604	4,418	47.3	40.5	49.3	45.7
Cooloolta (S)	15	288	902	83	4,745	4,047	4,381	13,173	53.1	46.8	49.1	49.7
Hervey Bay (C)	20	667	2,177	432	12,066	8,460	8,730	29,256	58.4	42.3	42.2	47.7
Isis (S)	5	66	210	18	1,087	710	909	2,706	53.1	35.9	44.4	44.6
Kingaroy (S)	6	140	391	62	1,966	2,291	1,428	5,685	45.3	54.5	32.9	44.1
Kolan (S)	3	38	136	13	709	548	643	1,900	60.2	48.1	54.6	54.3
Maryborough (C)	13	295	933	126	4,757	4,184	3,502	12,443	52.0	47.3	38.3	45.8
Miriam Vale (S)	7	122	414	69	2,711	2,403	2,487	7,601	71.7	65.7	65.8	67.7
Nanango (S)	4	50	126	11	733	642	719	2,094	47.3	42.8	46.4	45.5
Balance	16	197	556	73	3,121	2,714	2,236	8,071	51.1	45.9	36.6	44.5
Wide Bay-Burnett (SD)	122	2,405	7,649	1,081	42,523	35,532	34,332	112,387	57.0	49.2	46.0	50.8
Chinchilla (S)	5	78	202	23	1,061	993	949	3,003	43.9	42.4	39.2	41.8
Dalby (T)	7	148	444	50	2,572	2,214	2,160	6,946	56.1	49.9	47.1	51.0
Goondiwindi (T)	9	165	518	88	3,153	2,436	3,068	8,657	61.6	49.2	60.0	57.0
Ingwood (S)	4	38	118	16	568	494	473	1,535	48.2	43.3	40.2	43.9
Jondaryan (S)	4	40	115	8	400	318	340	1,058	32.3	26.5	27.4	28.8
Murilla (S)	3	47	136	16	713	745	771	2,229	48.9	52.8	52.9	51.5
Stanthorpe (S)	8	149	437	61	1,819	1,373	1,172	4,364	39.4	30.7	25.4	31.8
Taroom (S)	3	30	82	20	350	367	380	1,097	37.6	40.8	40.9	39.7
Toowoomba (C)	33	707	2,236	317	12,515	11,926	10,616	35,057	57.1	56.2	48.4	53.9
Warwick (S)												
Central	11	199	646	77	3,224	2,054	2,415	7,693	52.3	34.4	39.1	42.0
Balance	4	74	260	40	897	881	1,048	2,826	39.1	39.7	45.7	41.5
Total	15	273	906	117	4,121	2,935	3,463	10,519	48.7	35.8	40.9	41.9
Balance	11	124	327	75	669	628	577	1,874	19.3	17.2	15.0	17.1
Darling Downs (SD)	102	1,799	5,521	791	27,941	24,429	23,969	76,339	50.4	45.3	43.0	46.2
Balonne (S)	4	68	197	19	802	823	575	2,200	38.0	40.3	27.3	35.2
Murweh (S)	6	106	254	24	1,051	988	792	2,831	32.0	31.1	24.1	29.0
Paroo (S)	4	42	100	20	554	432	324	1,310	42.5	34.3	24.9	33.9
Roma (T)	8	169	485	57	2,612	2,229	2,173	7,014	49.9	44.0	41.5	45.1
Balance	8	85	248	31	1,107	926	893	2,926	42.0	36.3	33.9	37.4
South-West (S)	30	470	1,284	151	6,126	5,398	4,757	16,281	42.0	38.3	32.6	37.7

## SELECTED SUBDIVISIONS AND STATISTICAL LOCAL AREAS, QUEENSLAND, DECEMBER QUARTER 1994

Guest nights				Guest arrivals				Takings from accommodation (\$'000)			
Oct.	Nov.	Dec.	Dec. qtr	Oct.	Nov.	Dec.	Dec. qtr	Oct.	Nov.	Dec.	Dec. qtr
3,146	2,446	2,329	7,921	1,735	1,689	1,572	4,996	116	97	81	293
3,574	2,301	2,714	8,589	1,809	1,394	1,658	4,861	82	69	71	223
47,535	43,298	45,688	136,521	25,127	26,631	29,375	81,133	3,271	3,040	2,600	8,910
48,695	43,908	42,193	134,796	23,494	22,712	22,112	68,318	4,233	3,890	3,296	11,419
15,386	11,500	14,325	41,211	6,007	5,064	5,788	16,859	740	629	646	2,016
43,093	38,032	36,620	117,745	19,262	21,206	18,638	59,106	1,968	1,810	1,587	5,365
16,709	14,624	14,510	45,843	5,493	5,353	4,470	15,316	674	597	537	1,808
76,468	70,590	71,611	218,669	37,965	40,770	41,811	120,546	6,481	5,996	5,138	17,615
94,950	80,772	81,725	257,447	41,418	40,196	38,572	120,186	4,404	3,970	3,529	11,903
171,418	151,362	153,336	476,116	79,383	80,966	80,383	240,732	10,886	9,966	8,667	29,518
4,079	2,803	2,412	9,294	1,839	1,445	1,280	4,564	136	100	76	313
13,182	10,908	9,033	33,123	21,762	6,733	5,785	34,280	734	619	526	1,879
39,183	31,002	28,875	99,060	15,259	13,646	12,873	41,778	1,417	1,227	1,014	3,658
234,582	200,822	198,699	634,103	121,787	105,873	103,551	331,211	13,371	12,077	10,435	35,884
4,095	3,046	3,319	10,460	1,871	1,464	1,651	4,986	138	105	114	357
2,066	1,308	1,668	5,042	1,084	788	1,024	2,896	68	51	55	174
2,376	2,089	2,292	6,757	936	884	881	2,701	59	52	61	171
3,104	2,717	2,599	8,420	1,361	1,223	1,204	3,788	84	77	71	233
3,631	2,588	2,827	9,046	1,983	1,706	1,862	5,551	130	123	96	349
249,854	212,570	211,404	673,828	129,022	111,938	110,173	351,133	13,850	12,486	10,831	37,168
413	468	450	1,331	369	357	364	1,090	10	10	10	30
14,547	12,554	15,473	42,574	8,102	6,906	7,954	22,962	384	336	444	1,164
864	532	511	1,907	546	356	317	1,219	20	16	13	49
2,783	1,942	2,408	7,133	978	771	817	2,566	62	48	65	176
7,320	6,314	7,244	20,878	2,552	2,351	2,470	7,373	185	151	214	550
11,692	9,467	11,605	32,764	3,267	2,848	2,768	8,883	367	314	387	1,068
2,729	2,137	2,558	7,424	1,688	1,412	1,612	4,712	56	45	56	157
8,037	6,797	7,308	22,142	4,227	3,716	3,931	11,874	175	139	209	523
3,839	3,395	3,617	10,851	2,311	2,350	1,814	6,475	73	72	90	235
4,589	3,639	5,069	13,297	2,464	2,167	2,378	7,009	94	78	119	291
7,011	6,489	9,043	22,543	2,307	2,186	3,003	7,496	179	163	256	598
180,180	174,769	195,315	550,264	54,653	54,795	55,816	165,264	8,093	7,885	8,597	24,576
104,820	98,031	113,920	316,771	27,263	27,224	28,631	83,118	6,825	6,521	7,939	21,285
189,945	184,440	206,715	581,100	52,659	54,649	55,401	162,709	11,956	11,668	13,189	36,813
143,055	128,540	151,372	422,967	49,051	45,171	47,839	142,061	4,153	3,749	4,743	12,645
333,000	312,980	358,087	1,004,067	101,710	99,820	103,240	304,770	16,109	15,417	17,932	49,458
65,561	52,309	60,823	178,693	23,597	20,661	21,102	65,360	3,125	2,320	2,931	8,376
33,426	28,998	29,905	92,329	9,892	8,686	8,771	27,349	1,828	1,571	1,705	5,104
38,468	29,720	37,691	105,879	16,876	13,036	16,016	45,928	2,055	1,800	2,033	5,887
486,279	437,561	502,940	1,426,780	161,092	149,822	157,764	468,678	23,531	21,470	25,068	70,069
14,077	12,085	13,560	39,722	9,168	8,102	9,003	26,273	437	397	376	1,211
3,472	3,031	5,038	11,541	1,852	1,703	2,235	5,790	68	59	87	215
9,062	7,267	8,965	25,294	6,686	5,618	6,243	18,547	241	205	229	676
26,978	19,082	21,316	67,376	15,279	10,042	10,155	35,476	1,012	640	675	2,327
2,052	1,305	1,912	5,269	1,845	1,192	1,768	4,805	48	31	41	119
3,035	3,523	2,272	8,830	2,288	2,141	1,750	6,179	90	102	69	261
1,382	970	1,453	3,805	1,382	970	1,453	3,805	36	25	31	92
8,677	7,414	6,778	22,869	6,511	5,387	5,157	17,055	246	217	191	654
5,160	4,280	5,124	14,564	2,510	2,028	2,810	7,348	233	198	234	666
1,509	813	963	3,285	742	475	507	1,724	30	24	28	82
5,036	4,068	3,692	12,796	4,108	3,156	2,882	10,146	123	108	98	329
80,440	63,838	71,073	215,351	52,371	40,814	43,963	137,148	2,565	2,006	2,059	6,629
1,248	1,105	1,045	3,398	1,186	1,084	1,019	3,289	50	47	46	144
4,142	3,066	3,892	11,100	2,902	2,050	2,728	7,680	126	101	110	337
6,137	4,181	6,899	17,217	5,228	3,630	6,351	15,209	183	135	185	502
751	652	603	2,006	651	541	510	1,702	18	17	15	51
618	522	578	1,718	426	451	520	1,397	18	14	16	48
1,105	1,019	1,318	3,442	998	924	1,251	3,173	33	33	37	104
3,290	2,403	2,181	7,874	2,404	1,923	1,823	6,150	92	69	62	222
535	524	637	1,696	428	424	549	1,401	15	15	16	46
22,479	21,513	20,523	64,515	14,954	14,495	13,198	42,647	717	709	598	2,024
5,795	3,360	4,649	13,804	4,989	2,942	4,217	12,148	182	109	135	426
2,601	2,334	2,699	7,634	1,261	1,128	1,260	3,649	62	54	70	186
8,396	5,694	7,348	21,438	6,250	4,070	5,477	15,797	244	163	205	611
1,302	1,248	1,228	3,778	749	832	868	2,449	27	27	27	81
50,003	41,927	46,252	138,182	36,176	30,424	34,294	100,894	1,523	1,331	1,317	4,171
1,319	1,193	988	3,500	1,013	905	822	2,740	38	38	28	104
1,979	1,436	1,354	4,769	1,792	1,283	1,166	4,241	60	48	40	148
714	552	417	1,683	565	452	360	1,377	21	14	13	47
3,771	2,995	3,471	10,237	2,847	2,468	2,795	8,110	135	118	116	369
1,654	1,301	1,422	4,377	1,279	913	1,090	3,282	52	40	41	133
9,437	7,477	7,652	24,566	7,496	6,021	6,233	19,750	306	258	239	802

TABLE 7 — HOTELS, MOTELS AND GUEST HOUSES WITH FACILITIES: STATISTICAL DIVISIONS AND

Statistical Divisions and selected Subdivisions and Statistical Local Areas	Establish- ments	Guest rooms	Bed spaces	Employ- ment (persons)	Room nights occupied			Room occupancy rates (per cent)				
					Oct.	Nov.	Dec.	Dec. qtr	Oct.	Nov.	Dec.	Dec. qtr
Banana (S), Fitzroy (S) and Mount Morgan (S)	12	215	587	100	4,223	3,057	2,297	9,577	63.4	47.4	34.5	48.4
Bathinia (S)	5	59	170	26	696	584	467	1,747	38.1	33.0	25.5	32.2
Duarina (S)	6	111	324	77	2,312	2,153	1,853	6,318	67.2	64.7	53.9	61.9
Emerald (S)	9	261	722	167	5,015	4,819	3,629	13,463	62.0	61.5	44.9	56.1
Gladstone (C)	21	508	1,642	257	9,050	8,485	6,163	23,698	57.5	55.7	39.1	50.7
Livingstone (S)	16	681	2,205	671	12,286	10,473	11,257	34,016	58.2	51.3	53.3	54.3
Rockhampton (C)	36	1,075	3,272	452	23,692	22,176	18,695	64,563	72.0	69.6	56.5	66.0
Balance	11	234	738	187	5,211	4,925	5,204	15,340	71.8	70.2	71.7	71.3
<i>Fitzroy (SD)</i>	<i>116</i>	<i>3,144</i>	<i>9,660</i>	<i>1,937</i>	<i>62,485</i>	<i>56,672</i>	<i>49,565</i>	<i>168,722</i>	<i>64.4</i>	<i>60.3</i>	<i>51.0</i>	<i>58.5</i>
Barcardine (S)	4	51	166	21	1,036	802	697	2,535	65.5	52.4	44.1	54.0
Longreach (S)	5	161	473	76	2,991	1,971	1,600	6,562	59.9	40.8	32.1	44.3
Balance	7	88	257	38	1,242	1,267	1,108	3,617	45.5	48.0	40.6	44.7
<i>Central-West (SD)</i>	<i>16</i>	<i>300</i>	<i>896</i>	<i>135</i>	<i>5,269</i>	<i>4,040</i>	<i>3,405</i>	<i>12,714</i>	<i>56.7</i>	<i>44.9</i>	<i>36.6</i>	<i>46.1</i>
Belyando (S)	7	123	317	66	2,465	2,745	1,940	7,150	64.6	74.4	50.9	63.2
Mackay (C) — Parts A and B	47	1,495	4,548	839	27,403	25,895	25,535	78,833	59.1	57.7	55.1	57.3
Sarina (S)	6	95	327	60	2,144	2,028	1,861	6,033	72.8	71.2	63.2	69.0
Whitsunday (S)	24	2,502	8,570	2,227	56,060	52,121	47,406	155,587	72.3	69.4	61.1	67.6
Balance	6	100	252	97	1,535	1,522	1,602	4,659	49.5	50.7	51.7	50.6
<i>Mackay (SD)</i>	<i>90</i>	<i>4,315</i>	<i>14,014</i>	<i>3,289</i>	<i>89,607</i>	<i>84,311</i>	<i>78,344</i>	<i>252,262</i>	<i>67.0</i>	<i>65.1</i>	<i>58.6</i>	<i>63.5</i>
Bowen (S)	10	234	645	113	3,065	2,670	2,247	7,982	42.3	38.0	31.0	37.1
Burdekin (S)	7	94	286	34	2,085	1,983	1,638	5,706	71.6	70.3	56.2	66.0
Charters Towers (C)	8	127	440	60	2,400	2,221	1,623	6,244	61.0	58.3	41.2	53.4
Townsville (C)												
City	8	585	1,673	833	12,766	11,770	9,062	33,598	70.4	67.1	50.0	62.4
Hermit Park	3	89	276	14	1,769	1,524	1,470	4,763	64.1	57.1	53.3	58.2
Magnetic Island	3	134	435	87	1,402	1,043	1,428	3,873	33.8	25.9	34.4	31.4
North Ward-Castle Hill	10	423	1,242	140	8,008	7,150	6,649	21,807	61.1	56.3	50.7	56.0
Rosslea	6	164	505	36	2,750	2,512	2,799	8,061	54.1	51.1	55.1	53.4
Wulguru	3	55	172	47	1,211	1,132	1,159	3,502	71.0	68.6	68.0	69.2
Balance	12	590	1,828	228	11,604	10,186	9,633	31,423	63.4	57.5	52.7	57.9
<i>Total</i>	<i>45</i>	<i>2,040</i>	<i>6,131</i>	<i>1,385</i>	<i>39,510</i>	<i>35,317</i>	<i>32,200</i>	<i>107,027</i>	<i>62.5</i>	<i>57.7</i>	<i>50.9</i>	<i>57.0</i>
Balance	8	124	327	81	1,983	1,698	1,237	4,918	51.6	45.6	32.2	43.1
<i>Northern (SD)</i>	<i>78</i>	<i>2,619</i>	<i>7,829</i>	<i>1,673</i>	<i>49,043</i>	<i>43,889</i>	<i>38,945</i>	<i>131,877</i>	<i>60.4</i>	<i>55.9</i>	<i>48.0</i>	<i>54.7</i>
Atherton (S)	8	104	342	36	1,370	1,297	1,172	3,839	42.5	41.6	36.4	40.1
Cairns (C)												
Licensed hotels	15	2,199	6,645	1,821	57,532	53,653	47,169	158,354	84.4	81.3	69.2	78.3
Motels and guest houses	35	2,221	6,988	982	57,380	51,154	42,103	150,637	83.3	76.8	61.2	73.7
<i>Total</i>	<i>50</i>	<i>4,420</i>	<i>13,633</i>	<i>2,803</i>	<i>114,912</i>	<i>104,807</i>	<i>89,272</i>	<i>308,991</i>	<i>83.9</i>	<i>79.0</i>	<i>65.2</i>	<i>76.0</i>
Cardwell (S)	10	392	1,251	360	7,379	6,775	5,867	20,021	60.7	57.6	48.3	55.5
Douglas (S)	19	1,300	3,933	1,068	30,777	24,436	18,784	73,997	76.4	62.7	46.7	61.9
Eacham (S)	5	98	274	32	1,002	864	967	2,833	33.0	29.4	31.8	31.4
Herberton (S)	3	27	84	22	314	244	164	722	37.5	30.1	19.6	29.1
Johnstone (S)	12	269	768	90	4,579	3,780	3,497	11,856	54.9	46.8	41.9	47.9
Mareeba (S)	8	139	444	84	2,195	2,174	1,467	5,836	50.9	52.1	34.0	45.6
Mulgrave (S) — Parts A and B	15	995	2,854	591	22,680	19,792	16,803	59,275	73.5	66.3	54.5	64.8
Torres (S)	3	78	260	38	1,390	1,295	935	3,620	57.5	55.3	38.7	50.4
Balance	10	236	668	137	3,495	3,065	2,450	9,010	47.8	43.3	33.5	41.5
<i>Far North (SD)</i>	<i>143</i>	<i>8,058</i>	<i>24,511</i>	<i>5,261</i>	<i>190,093</i>	<i>168,529</i>	<i>141,378</i>	<i>500,000</i>	<i>76.1</i>	<i>69.7</i>	<i>56.6</i>	<i>67.5</i>
Carpentaria (S)	4	62	179	26	617	629	313	1,559	32.1	33.8	16.3	27.3
Flinders (S)	4	54	142	28	729	826	557	2,112	43.5	51.0	33.3	42.5
Mount Isa (C)	14	373	974	185	6,136	6,020	4,877	17,033	53.1	53.8	42.2	49.6
Balance	8	100	314	44	1,398	1,649	1,210	4,257	45.1	55.0	39.0	46.3
<i>North-West (SD)</i>	<i>30</i>	<i>589</i>	<i>1,609</i>	<i>283</i>	<i>8,880</i>	<i>9,124</i>	<i>6,957</i>	<i>24,961</i>	<i>48.6</i>	<i>51.6</i>	<i>38.1</i>	<i>46.1</i>
<i>Queensland</i>	<i>1,101</i>	<i>40,760</i>	<i>124,631</i>	<i>30,593</i>	<i>877,630</i>	<i>791,271</i>	<i>736,536</i>	<i>2,405,437</i>	<i>69.5</i>	<i>64.8</i>	<i>58.3</i>	<i>64.2</i>
Albert (S) (b)	11	681	1,981	538	13,257	10,873	12,867	36,997	62.8	53.2	60.9	59.1
Beaudesert (S) (b)	12	376	1,180	402	7,377	5,870	6,393	19,640	63.3	52.0	54.8	56.8
Caboollure (S) (b)	8	131	408	187	2,307	1,897	2,062	6,266	56.8	48.3	50.8	52.0
Great Barrier Reef islands (c)	22	2,773	9,095	2,877	65,686	59,618	55,531	180,835	76.4	71.7	64.6	70.9
Sunshine Coast Statistical District (d)												
Licensed hotels	14	1,126	3,081	1,776	24,004	19,437	20,840	64,281	68.8	57.5	59.7	62.1
Motels and guest houses	64	1,354	4,302	538	26,264	23,323	22,242	71,829	62.6	57.4	53.0	57.7
<i>Total</i>	<i>78</i>	<i>2,480</i>	<i>7,383</i>	<i>2,314</i>	<i>50,268</i>	<i>42,760</i>	<i>43,082</i>	<i>136,110</i>	<i>65.4</i>	<i>57.5</i>	<i>56.0</i>	<i>59.7</i>

(a) Brisbane City Core comprises the suburbs of Bowen Hills, City, Dutton Park, Fortitude Valley, Herston, Highgate Hill, Kangaroo Point, Kelvin Grove, Milton, New Farm, Newstead, Paddington, Red Hill, South Brisbane, Spring Hill, West End and Woolloongabba. (b) Albert, Beaudesert and Caboollure Shires straddle the boundary line between Brisbane and Moreton Statistical Divisions. (c) Great Barrier Reef islands establishments are those on coastal islands from Lady Elliot in the south to Lizard in the north. (d) Sunshine Coast Statistical District comprises the more urban coastal portions of Caloundra City and Maroochy and Noosa Shires.



## SELECTED SUBDIVISIONS AND STATISTICAL LOCAL AREAS, QUEENSLAND, DECEMBER QUARTER 1994—continued

Guest nights				Guest arrivals				Takings from accommodation (\$ '000)			
Oct.	Nov.	Dec.	Dec qtr	Oct.	Nov.	Dec.	Dec. qtr	Oct.	Nov.	Dec.	Dec. qtr
6,014	4,243	3,535	13,792	2,501	2,236	2,195	6,932	199	147	117	463
1,137	998	892	3,027	726	505	500	1,731	44	45	31	120
3,047	2,657	2,649	8,353	1,166	1,167	822	3,155	105	98	96	299
7,075	6,675	5,680	19,430	4,728	4,285	3,895	12,908	281	278	208	766
13,389	11,395	9,550	34,334	7,870	6,570	6,341	20,781	472	436	312	1,220
24,904	20,969	27,590	73,463	6,792	6,182	6,928	19,902	1,143	944	1,305	3,392
38,573	35,702	35,370	109,645	24,660	22,813	25,257	72,730	1,417	1,291	1,057	3,766
10,050	8,840	10,780	29,670	3,672	3,351	3,800	10,823	656	608	680	1,944
104,189	91,479	96,046	291,714	52,115	47,109	49,738	148,962	4,317	3,847	3,805	11,970
1,298	1,190	967	3,455	947	945	799	2,691	41	37	34	111
5,495	3,204	3,139	11,838	3,230	2,021	2,149	7,400	182	113	97	392
2,030	1,831	1,905	5,766	1,527	1,323	1,463	4,313	58	55	48	161
8,823	6,225	6,011	21,059	5,704	4,289	4,411	14,404	281	206	179	665
3,257	3,645	2,565	9,467	1,652	1,445	1,027	4,124	111	131	86	328
49,068	45,089	49,741	143,898	27,261	26,301	28,048	81,610	1,859	1,683	1,678	5,221
3,780	3,367	3,869	11,016	2,177	1,748	2,347	6,272	84	84	85	253
123,825	110,937	112,445	347,207	33,776	30,999	30,900	95,675	7,599	7,054	7,437	22,090
2,515	2,242	2,471	7,228	1,406	1,157	1,311	3,874	84	85	86	255
182,445	165,280	171,091	518,816	66,272	61,650	63,633	191,555	9,737	9,038	9,373	28,148
4,737	3,695	3,994	12,426	2,981	2,185	2,071	7,237	132	108	97	336
2,922	2,865	2,521	8,308	2,336	2,157	2,025	6,518	92	86	71	249
4,091	4,894	3,126	12,111	2,458	2,232	1,935	6,625	130	118	92	339
19,737	17,791	14,779	52,307	13,744	13,037	10,886	37,667	1,113	993	804	2,910
3,088	2,817	3,125	9,030	1,951	1,620	1,921	5,492	78	67	68	213
2,806	2,004	2,995	7,805	1,752	1,564	1,931	5,247	80	58	61	199
13,286	12,592	12,606	38,484	5,513	4,727	4,719	14,959	470	402	393	1,265
4,783	4,175	5,181	14,139	2,915	2,541	3,152	8,608	120	110	120	351
1,969	1,817	2,495	6,281	961	1,043	1,384	3,388	45	42	45	133
16,443	14,650	15,134	46,227	8,813	8,093	7,760	24,666	704	603	601	1,907
62,112	53,846	56,315	174,273	35,649	32,625	31,753	100,027	2,611	2,274	2,092	6,978
3,298	2,778	2,074	8,150	1,480	1,279	1,086	3,845	309	254	153	715
77,160	70,078	68,030	215,268	44,904	40,478	38,870	124,252	3,273	2,840	2,504	8,617
2,243	2,092	2,467	6,802	1,546	1,545	1,473	4,564	63	54	51	168
94,186	88,030	81,030	263,246	29,168	28,417	25,429	83,014	6,669	6,228	5,483	18,379
104,983	91,173	80,337	276,493	34,093	29,057	27,530	90,680	4,061	3,597	2,994	10,652
199,169	179,203	161,367	539,739	63,261	57,474	52,959	173,694	10,730	9,825	8,477	29,032
14,416	12,598	13,004	40,018	4,952	4,593	4,724	14,269	1,630	1,409	1,188	4,227
64,579	49,618	40,111	154,308	16,665	13,514	11,028	41,207	5,152	4,574	3,670	13,396
1,761	1,431	1,722	4,914	1,248	1,012	1,143	3,403	49	39	37	124
494	322	259	1,075	309	244	210	763	9	8	6	24
8,627	6,754	6,647	22,028	4,118	3,325	3,342	10,785	244	201	202	647
4,137	3,928	2,865	10,930	1,278	1,245	1,070	3,593	113	114	84	311
47,648	38,644	36,792	123,084	11,256	9,728	10,369	31,353	2,247	1,748	1,545	5,540
2,092	1,952	1,587	5,631	482	387	365	1,234	150	145	114	409
6,062	5,050	4,362	15,474	3,390	2,613	2,214	8,217	705	619	516	1,840
351,228	301,592	271,183	924,003	108,505	95,680	88,897	293,082	21,092	18,735	15,889	55,716
717	703	353	1,773	548	569	275	1,392	29	29	15	73
1,125	1,256	939	3,320	857	957	711	2,525	27	37	26	90
8,350	7,799	7,389	23,538	4,573	3,601	3,986	12,160	361	359	296	1,016
1,968	2,334	1,546	5,848	1,494	1,626	1,374	4,494	68	72	57	197
12,160	12,092	10,227	34,479	7,472	6,753	6,346	20,571	485	497	394	1,376
1,612,018	1,410,119	1,461,909	4,484,046	671,129	594,978	604,322	1,870,429	80,959	72,714	71,659	225,332
21,093	15,610	21,024	57,727	7,091	6,109	7,145	20,345	1,400	1,203	1,452	4,055
13,786	10,930	12,911	37,627	7,426	5,062	6,749	19,237	550	512	479	1,541
4,378	3,596	4,392	12,366	2,557	2,331	2,406	7,294	129	104	116	349
143,527	125,377	126,110	395,014	39,630	36,215	35,841	111,686	11,063	9,926	10,152	31,140
51,985	40,065	48,515	140,565	16,458	14,226	14,459	45,143	3,438	2,589	3,185	9,212
57,535	50,397	52,759	160,691	22,230	19,585	20,294	62,109	1,781	1,536	1,739	5,056
109,520	90,462	101,274	301,256	38,688	33,811	34,753	107,252	5,219	4,125	4,924	14,268

TABLE 8 — HOLIDAY FLATS, UNITS AND HOUSES BY STATISTICAL DIVISION, QUEENSLAND

Particulars	Brisbane (SD)			Moreton (SD)			Wide Bay-Burnett (SD)			Fitzroy (SD)
	Real estate agents	Other letting entities	Total	Real estate agents	Other letting entities	Total	Real estate agents	Other letting entities	Total	Total
LETTING ENTITIES, CAPACITY AND EMPLOYMENT										
<i>December quarter 1993—</i>										
Letting entities	5	26	31	62	340	402	16	23	39	11
Flats, units and houses										
Single bedroom	13	170	183	190	2,155	2,345	26	29	55	53
Multiple bedroom	205	299	504	3,768	7,013	10,781	405	160	565	44
<i>Total flats, units and houses</i>	<i>218</i>	<i>469</i>	<i>687</i>	<i>3,958</i>	<i>9,168</i>	<i>13,126</i>	<i>431</i>	<i>189</i>	<i>620</i>	<i>97</i>
Bed spaces	1,177	1,885	3,062	16,981	35,203	52,184	2,065	809	2,874	386
Employment (persons) (a)		93	93	—	1,510	1,510	—	68	68	26
<i>December quarter 1994—</i>										
Letting entities	6	27	33	61	366	427	16	28	44	11
Flats, units and houses										
Single bedroom	15	233	248	166	2,075	2,241	27	37	64	55
Multiple bedroom	267	310	577	3,790	8,060	11,850	437	268	705	44
<i>Total flats, units and houses</i>	<i>282</i>	<i>543</i>	<i>825</i>	<i>3,956</i>	<i>10,135</i>	<i>14,091</i>	<i>464</i>	<i>305</i>	<i>769</i>	<i>99</i>
Bed spaces	1,473	2,041	3,514	17,177	39,882	57,059	2,213	1,298	3,511	389
Employment (persons) (a)	—	109	109	—	1,701	1,701	—	102	102	26
UNIT NIGHTS OCCUPIED										
<i>December quarter 1993</i>	<i>11,843</i>	<i>24,878</i>	<i>36,721</i>	<i>193,522</i>	<i>554,931</i>	<i>748,453</i>	<i>13,065</i>	<i>9,667</i>	<i>22,732</i>	<i>5,025</i>
<i>1994—</i>										
October	4,243	11,365	15,608	59,408	223,393	282,801	3,874	5,529	9,403	1,653
November	3,978	10,323	14,301	53,798	187,944	241,742	3,660	4,088	7,748	1,423
December	6,647	10,473	17,120	77,007	199,138	276,145	6,111	4,686	10,797	1,596
<i>December quarter 1994</i>	<i>14,868</i>	<i>32,161</i>	<i>47,029</i>	<i>190,213</i>	<i>610,475</i>	<i>800,688</i>	<i>13,645</i>	<i>14,303</i>	<i>27,948</i>	<i>4,672</i>
UNIT OCCUPANCY RATES (per cent)										
<i>December quarter 1993</i>	<i>59.0</i>	<i>57.7</i>	<i>58.1</i>	<i>53.1</i>	<i>65.8</i>	<i>62.0</i>	<i>32.9</i>	<i>55.7</i>	<i>39.9</i>	<i>56.3</i>
<i>1994—</i>										
October	48.5	67.5	61.0	48.4	71.2	64.8	26.9	58.5	39.4	53.9
November	47.0	63.4	57.8	45.5	61.9	57.3	26.3	44.7	33.6	47.9
December	76.0	62.2	66.9	63.0	63.4	63.3	42.5	49.6	45.3	52.0
<i>December quarter 1994</i>	<i>57.3</i>	<i>64.4</i>	<i>62.0</i>	<i>52.4</i>	<i>65.6</i>	<i>61.9</i>	<i>32.0</i>	<i>51.0</i>	<i>39.5</i>	<i>51.3</i>
UNIT LETTINGS										
<i>December quarter 1993</i>	<i>1,769</i>	<i>4,328</i>	<i>6,097</i>	<i>18,934</i>	<i>96,151</i>	<i>115,085</i>	<i>1,686</i>	<i>2,281</i>	<i>3,967</i>	<i>1,862</i>
<i>1994—</i>										
October	553	2,343	2,896	6,005	39,608	45,613	524	1,627	2,151	706
November	518	2,113	2,631	5,091	33,254	38,345	460	1,277	1,737	585
December	872	1,938	2,810	7,884	34,275	42,159	788	1,247	2,035	512
<i>December quarter 1994</i>	<i>1,943</i>	<i>6,394</i>	<i>8,337</i>	<i>18,980</i>	<i>107,137</i>	<i>126,117</i>	<i>1,772</i>	<i>4,151</i>	<i>5,923</i>	<i>1,803</i>
AVERAGE LENGTH OF STAY (days)										
<i>December quarter 1993</i>	<i>6.7</i>	<i>5.7</i>	<i>6.0</i>	<i>10.2</i>	<i>5.8</i>	<i>6.5</i>	<i>7.7</i>	<i>4.2</i>	<i>5.7</i>	<i>2.7</i>
<i>1994—</i>										
October	7.7	4.9	5.4	9.9	5.6	6.2	7.4	3.4	4.4	2.3
November	7.7	4.9	5.4	10.6	5.7	6.3	8.0	3.2	4.5	2.4
December	7.6	5.4	6.1	9.8	5.8	6.6	7.8	3.8	5.3	3.1
<i>December quarter 1994</i>	<i>7.7</i>	<i>5.0</i>	<i>5.6</i>	<i>10.0</i>	<i>5.7</i>	<i>6.3</i>	<i>7.7</i>	<i>3.4</i>	<i>4.7</i>	<i>2.6</i>
TAKINGS FROM ACCOMMODATION (\$'000)										
<i>December quarter 1993</i>	<i>294</i>	<i>1,633</i>	<i>1,927</i>	<i>7,624</i>	<i>36,577</i>	<i>44,201</i>	<i>430</i>	<i>412</i>	<i>842</i>	<i>219</i>
<i>1994—</i>										
October	97	827	924	2,285	14,947	17,232	124	357	481	77
November	79	787	866	1,882	12,151	14,032	141	241	383	61
December	170	737	906	3,997	16,363	20,360	271	325	596	81
<i>December quarter 1994</i>	<i>346</i>	<i>2,351</i>	<i>2,697</i>	<i>8,164</i>	<i>43,461</i>	<i>51,625</i>	<i>536</i>	<i>924</i>	<i>1,460</i>	<i>220</i>

TABLE 8 — HOLIDAY FLATS, UNITS AND HOUSES BY STATISTICAL DIVISION, QUEENSLAND—continued

Particulars	Mackay (SD)	Northern (SD)		Far North (SD)	Balance of State	Queensland			
	Total	Real estate agents	Other letting entities	Total	Total	Total	Real estate agents	Other letting entities	Total
LETTING ENTITIES, CAPACITY AND EMPLOYMENT									
<i>December quarter 1993—</i>									
Letting entities	20	4	26	30	73	5	91	520	611
Flats, units and houses									
Single bedroom	93	3	131	134	629	20	272	3,240	3,512
Multiple bedroom	111	57	117	174	890	27	4,548	8,548	13,096
<i>Total flats, units and houses</i>	<i>204</i>	<i>60</i>	<i>248</i>	<i>308</i>	<i>1,519</i>	<i>47</i>	<i>4,820</i>	<i>11,788</i>	<i>16,608</i>
Bed spaces	906	337	1,059	1,396	5,451	315	21,193	45,381	66,574
Employment (persons) (a)	77	-	68	68	305	13	—	2,160	2,160
<i>December quarter 1994—</i>									
Letting entities	18	4	25	29	79	10	91	560	651
Flats, units and houses									
Single bedroom	88	4	124	128	687	50	224	3,337	3,561
Multiple bedroom	102	58	113	171	945	75	4,680	9,789	14,469
<i>Total flats, units and houses</i>	<i>190</i>	<i>62</i>	<i>237</i>	<i>299</i>	<i>1,632</i>	<i>125</i>	<i>4,904</i>	<i>13,126</i>	<i>18,030</i>
Bed spaces	841	313	1,029	1,342	6,225	629	21,757	51,753	73,510
Employment (persons) (a)	55	-	63	63	347	32	—	2,435	2,435
UNIT NIGHTS OCCUPIED									
<i>December quarter 1993</i>	<i>10,665</i>	<i>991</i>	<i>10,860</i>	<i>11,851</i>	<i>64,201</i>	<i>2,303</i>	<i>222,685</i>	<i>679,266</i>	<i>901,951</i>
<i>1994</i>									
October	3,548	331	4,029	4,360	32,749	1,574	68,690	283,006	351,696
November	3,113	136	3,351	3,487	23,493	1,471	62,322	234,456	296,778
December	3,363	412	3,850	4,262	21,707	1,664	91,103	245,551	336,654
<i>December quarter 1994</i>	<i>10,024</i>	<i>879</i>	<i>11,230</i>	<i>12,109</i>	<i>77,949</i>	<i>4,709</i>	<i>222,115</i>	<i>763,013</i>	<i>985,128</i>
UNIT OCCUPANCY RATES (per cent)									
<i>December quarter 1993</i>	<i>56.8</i>	<i>18.0</i>	<i>47.6</i>	<i>41.8</i>	<i>45.9</i>	<i>53.3</i>	<i>50.2</i>	<i>62.7</i>	<i>59.1</i>
<i>1994—</i>									
October	60.2	17.2	54.8	47.0	64.7	40.6	45.2	69.7	63.0
November	54.6	7.3	47.1	38.9	48.0	39.2	42.5	59.6	55.0
December	57.1	21.4	52.4	46.0	42.9	42.9	60.1	60.3	60.3
<i>December quarter 1994</i>	<i>57.3</i>	<i>15.4</i>	<i>51.5</i>	<i>44.0</i>	<i>51.9</i>	<i>40.9</i>	<i>49.3</i>	<i>63.2</i>	<i>59.5</i>
UNIT LETTINGS									
<i>December quarter 1993</i>	<i>2,983</i>	<i>145</i>	<i>2,394</i>	<i>2,539</i>	<i>13,823</i>	<i>1,096</i>	<i>22,857</i>	<i>124,595</i>	<i>147,452</i>
<i>1994</i>									
October	957	53	1,052	1,105	6,892	714	7,229	53,805	61,034
November	854	25	879	904	5,193	621	6,174	44,696	50,870
December	874	71	1,017	1,088	5,063	835	9,720	45,656	55,376
<i>December quarter 1994</i>	<i>2,685</i>	<i>149</i>	<i>2,948</i>	<i>3,097</i>	<i>17,148</i>	<i>2,170</i>	<i>23,123</i>	<i>144,157</i>	<i>167,280</i>
AVERAGE LENGTH OF STAY (days)									
<i>December quarter 1993</i>	<i>3.6</i>	<i>6.8</i>	<i>4.5</i>	<i>4.7</i>	<i>4.6</i>	<i>2.1</i>	<i>9.7</i>	<i>5.5</i>	<i>6.1</i>
<i>1994—</i>									
October	3.7	6.2	3.8	3.9	4.8	2.2	9.5	5.3	5.8
November	3.6	5.4	3.8	3.9	4.5	2.4	10.1	5.2	5.8
December	3.8	5.8	3.8	3.9	4.3	2.0	9.4	5.4	6.1
<i>December quarter 1994</i>	<i>3.7</i>	<i>5.9</i>	<i>3.8</i>	<i>3.9</i>	<i>4.5</i>	<i>2.2</i>	<i>9.6</i>	<i>5.3</i>	<i>5.9</i>
TAKINGS FROM ACCOMMODATION (\$'000)									
<i>December quarter 1993</i>	<i>591</i>	<i>41</i>	<i>586</i>	<i>628</i>	<i>5,566</i>	<i>105</i>	<i>8,568</i>	<i>45,510</i>	<i>54,078</i>
<i>1994—</i>									
October	213	14	208	222	3,096	84	2,564	19,765	22,329
November	180	6	177	184	2,365	69	2,148	15,993	18,141
December	187	20	205	225	2,101	94	4,519	20,032	24,551
<i>December quarter 1994</i>	<i>580</i>	<i>41</i>	<i>590</i>	<i>630</i>	<i>7,562</i>	<i>247</i>	<i>9,230</i>	<i>55,790</i>	<i>65,020</i>

(a) Employment numbers exclude real estate agents and their employees.

TABLE 9—HOLIDAY FLATS, UNITS AND HOUSES: STATISTICAL DIVISIONS AND SELECTED

Statistical Divisions and Selected Subdivisions and Statistical Local Areas	Flats, units and houses			Total	Bed spaces	Employment (persons) (a)	Unit nights occupied			Dec. qtr
	Letting entities	Single bedroom	Multiple bedroom				Oct.	Nov.	Dec.	
<b>Brisbane City (SSD)</b>										
Brisbane City Core (b)	8	84	106	190	719	31	4,522	4,468	4,186	13,176
Toowong	4	15	69	84	330	19	2,211	1,778	1,744	5,733
Balance	9	86	78	164	538	38	2,893	2,567	2,555	8,015
<b>Total</b>	<b>21</b>	<b>185</b>	<b>253</b>	<b>438</b>	<b>1,587</b>	<b>88</b>	<b>9,626</b>	<b>8,813</b>	<b>8,485</b>	<b>26,924</b>
<b>Redland (S) — Balance (c)</b>	8	58	264	322	1,595	19	5,129	4,741	7,842	17,712
Balance	4	5	60	65	332	2	853	747	793	2,393
<b>Brisbane (SD)</b>	<b>33</b>	<b>248</b>	<b>577</b>	<b>825</b>	<b>3,514</b>	<b>109</b>	<b>15,608</b>	<b>14,301</b>	<b>17,120</b>	<b>47,029</b>
<b>Caboolture (S) — Part B</b>	7	1	266	267	1,340	6	4,105	3,180	4,420	11,705
<b>Gold Coast City (SSD)</b>										
Biggera Waters	4	15	105	120	490	15	2,774	2,403	2,684	7,861
Broadbeach	24	183	582	765	2,855	118	16,379	12,614	13,715	42,708
Burleigh Heads	26	124	811	935	3,639	104	19,403	15,030	19,151	53,584
Coolangaita	26	111	855	966	3,745	88	20,172	17,992	20,545	58,709
Currumbin	5	7	188	195	974	25	3,696	2,747	3,735	10,178
Labrador	6	10	59	69	278	13	1,244	1,103	1,219	3,566
Main Beach-Broadwater	13	13	259	272	1,204	42	4,771	3,533	4,255	12,559
Mermaid Beach	14	21	322	343	1,425	29	7,303	5,447	6,721	19,471
Miami	9	24	232	256	1,120	28	3,952	3,239	3,892	11,083
Palm Beach	15	3	383	386	1,583	53	6,956	5,902	6,653	19,511
Surfers Paradise	106	1,335	2,394	3,729	13,097	580	86,306	72,258	74,279	232,843
Tugun	7	8	230	238	978	16	4,288	3,477	5,496	13,261
Balance	5	24	60	84	284	20	1,809	1,343	1,546	4,698
<b>Total</b>	<b>260</b>	<b>1,878</b>	<b>6,480</b>	<b>8,358</b>	<b>31,672</b>	<b>1,131</b>	<b>179,053</b>	<b>147,088</b>	<b>163,891</b>	<b>490,032</b>
<b>Sunshine Coast Statistical District (d)</b>										
Caloundra (C) — Part A	26	37	1,123	1,160	5,431	59	18,311	18,308	26,149	62,768
Maroochy (S) — Part A	53	106	1,598	1,704	7,405	190	29,038	26,711	32,709	88,458
Noosa (S) — Part A	75	206	2,228	2,434	10,394	266	48,725	43,351	45,188	137,264
<b>Total</b>	<b>154</b>	<b>349</b>	<b>4,949</b>	<b>5,298</b>	<b>23,230</b>	<b>515</b>	<b>96,074</b>	<b>88,370</b>	<b>104,046</b>	<b>288,490</b>
<b>Balance</b>	<b>6</b>	<b>13</b>	<b>155</b>	<b>168</b>	<b>817</b>	<b>49</b>	<b>3,569</b>	<b>3,104</b>	<b>3,788</b>	<b>10,461</b>
<b>Moreton (SD)</b>	<b>427</b>	<b>2,241</b>	<b>11,850</b>	<b>14,091</b>	<b>57,059</b>	<b>1,701</b>	<b>282,801</b>	<b>241,742</b>	<b>276,145</b>	<b>800,688</b>
<b>Burnett (S) Parts A and B</b>	5	7	73	80	312	12	886	897	1,061	2,844
Cooloola (S)	4	15	139	154	764	12	765	708	1,687	3,160
Hervey Bay (C)	32	37	476	513	2,331	71	7,285	5,907	7,583	20,775
Balance	3	5	17	22	104	7	467	236	466	1,169
<b>Wide Bay-Burnett (SD)</b>	<b>44</b>	<b>64</b>	<b>705</b>	<b>769</b>	<b>3,511</b>	<b>102</b>	<b>9,403</b>	<b>7,748</b>	<b>10,797</b>	<b>27,948</b>
<b>Darling Downs (SD)</b>	5	2	66	68	402	16	812	723	884	2,419
<b>Fitzroy (SD)</b>	11	55	44	99	389	26	1,653	1,423	1,596	4,672
<b>Mackay (C) — Parts A and B</b>	4	17	54	71	381	20	1,427	1,306	1,432	4,165
Whitsunday (S)	14	71	48	119	460	35	2,121	1,807	1,931	5,859
<b>Mackay (SD)</b>	<b>18</b>	<b>88</b>	<b>102</b>	<b>190</b>	<b>841</b>	<b>55</b>	<b>3,548</b>	<b>3,113</b>	<b>3,363</b>	<b>10,024</b>
<b>Townsville (C)</b>										
Magnetic Island	12	54	80	134	612	17	1,439	749	1,368	3,556
North Ward-Castle Hill	6	11	43	54	238	14	1,324	1,310	1,313	3,947
Balance	3	13	24	37	162	8	690	777	741	2,208
<b>Total</b>	<b>21</b>	<b>78</b>	<b>147</b>	<b>225</b>	<b>1,012</b>	<b>39</b>	<b>3,453</b>	<b>2,836</b>	<b>3,422</b>	<b>9,711</b>
<b>Balance</b>	<b>8</b>	<b>50</b>	<b>24</b>	<b>74</b>	<b>330</b>	<b>24</b>	<b>907</b>	<b>651</b>	<b>840</b>	<b>2,398</b>
<b>Northern (SD)</b>	29	128	171	299	1,342	63	4,360	3,487	4,262	12,109
<b>Cairns (C)</b>	29	371	409	780	2,834	118	14,971	11,751	10,791	37,513
Douglas (S)	22	96	270	366	1,468	62	7,817	4,723	4,242	16,782
Mulgrave (S) — Parts A and B	21	207	205	412	1,580	149	9,363	6,534	5,949	21,846
Balance	7	13	61	74	343	18	598	485	725	1,808
<b>Far North (SD)</b>	<b>79</b>	<b>687</b>	<b>945</b>	<b>1,632</b>	<b>6,225</b>	<b>347</b>	<b>32,749</b>	<b>23,493</b>	<b>21,707</b>	<b>77,949</b>
<b>Balance of State</b>	<b>5</b>	<b>48</b>	<b>9</b>	<b>57</b>	<b>227</b>	<b>16</b>	<b>762</b>	<b>748</b>	<b>780</b>	<b>2,290</b>
<b>Queensland</b>	<b>651</b>	<b>3,561</b>	<b>14,469</b>	<b>18,030</b>	<b>73,510</b>	<b>2,435</b>	<b>351,696</b>	<b>296,778</b>	<b>336,654</b>	<b>985,128</b>

(a) Employment numbers exclude real estate agents and their employees. (b) Brisbane City Core comprises the suburbs of Bowen Hills, City, Dutton Park, Fortitude Valley, Herston, Highgate Hill, Kangaroo Point, Kelvin Grove, Milton, New Farm, Newstead, Paddington, Red Hill, South Brisbane, Spring Hill, West End and Woolloongabba. (c) Redland (S) Balance comprises properties on North Stradbroke and Coochiemudlo Islands. (d) Sunshine Coast Statistical District comprises the more urban coastal portions of Caloundra City and Maroochy and Noosa Shires.

## SUBDIVISIONS AND STATISTICAL LOCAL AREAS, QUEENSLAND, DECEMBER QUARTER 1994

Unit occupancy rates (per cent)				Unit lettings				Average length of stay (days)	Takings from accommodation (\$'000)			
Oct.	Nov.	Dec.	Dec. qtr	Oct.	Nov.	Dec.	Dec. qtr	Dec. qtr	Oct.	Nov.	Dec.	Dec. qtr
76.8	78.4	71.1	75.4	524	489	487	1,500	8.8	360	368	331	1,059
84.9	70.6	67.0	74.2	219	161	167	547	10.5	162	146	143	450
56.9	52.2	50.3	53.1	1,053	963	852	2,868	2.8	167	158	149	474
70.9	67.1	62.5	66.8	1,796	1,613	1,506	4,915	5.5	689	672	623	1,983
51.4	49.1	78.6	59.8	997	943	1,173	3,113	5.7	207	178	252	636
42.3	38.3	39.4	40.0	103	75	131	309	7.7	29	17	32	77
61.0	57.8	66.9	62.0	2,896	2,631	2,810	8,337	5.6	924	866	906	2,697
49.6	39.7	53.4	47.7	559	448	649	1,656	7.1	108	94	243	445
74.6	66.8	72.2	71.2	576	621	627	1,824	4.3	190	167	223	581
69.1	55.0	57.8	60.7	3,868	2,980	3,310	10,158	4.2	1,167	974	1,232	3,373
67.0	53.6	66.1	62.3	2,465	1,860	2,354	6,679	8.0	1,111	859	1,397	3,367
67.4	62.1	68.6	66.1	2,397	2,046	2,264	6,707	8.8	1,058	915	1,204	3,176
61.1	47.0	61.8	56.7	635	459	638	1,732	5.9	213	170	354	737
58.2	53.3	57.0	56.2	163	140	192	495	7.2	59	46	81	186
56.6	43.3	50.5	50.2	742	541	595	1,878	6.7	325	227	434	987
68.7	52.9	63.2	61.7	852	588	717	2,157	9.0	272	194	293	759
49.8	42.2	49.0	47.1	608	461	640	1,709	6.5	223	133	273	630
58.1	52.7	57.5	56.2	1,005	976	1,193	3,174	6.1	353	257	474	1,084
74.7	64.6	64.3	67.9	14,072	11,478	11,789	37,339	6.2	5,866	4,814	6,204	16,885
58.1	48.7	74.5	60.6	449	393	577	1,419	9.3	183	166	388	736
69.5	53.3	59.4	60.8	347	255	296	898	5.2	103	78	102	283
69.1	58.8	63.4	63.8	28,179	22,798	25,192	76,169	6.4	11,123	9,000	12,659	32,782
50.9	52.6	72.7	58.8	2,210	1,855	3,077	7,142	8.8	622	524	1,221	2,367
55.0	52.3	61.9	56.4	4,818	4,419	4,887	14,124	6.3	1,441	1,266	2,230	4,938
64.7	59.4	59.9	61.4	9,187	8,281	7,754	25,222	5.4	3,645	2,932	3,725	10,302
58.5	55.6	63.4	59.2	16,215	14,555	15,718	46,488	6.2	5,709	4,721	7,176	17,606
75.2	67.1	72.7	71.7	660	544	600	1,804	5.8	293	217	281	791
64.8	57.3	63.3	61.9	45,613	38,345	42,159	126,117	6.3	17,232	14,032	20,360	51,625
35.7	37.4	42.8	38.6	260	237	226	723	3.9	57	57	72	185
16.0	15.3	35.3	22.3	152	125	270	547	5.8	37	25	106	168
45.8	38.4	47.7	44.0	1,632	1,316	1,455	4,403	4.7	374	294	401	1,069
68.5	35.8	68.3	57.8	107	59	84	250	4.7	14	7	17	38
39.4	33.6	45.3	39.5	2,151	1,737	2,035	5,923	4.7	481	383	596	1,460
38.5	35.4	41.9	38.7	287	257	478	1,022	2.4	55	44	53	152
53.9	47.9	52.0	51.3	706	585	512	1,803	2.6	77	61	81	220
64.8	61.3	65.1	63.8	307	274	320	901	4.6	69	59	59	186
57.5	50.6	52.3	53.5	650	580	554	1,784	3.3	144	121	128	394
60.2	54.6	57.1	57.3	957	854	874	2,685	3.7	213	180	187	580
34.6	18.6	32.9	28.8	358	225	340	923	3.9	78	39	72	189
79.1	80.9	78.4	79.4	328	320	338	986	4.0	55	56	62	173
60.2	70.0	64.6	64.9	138	139	155	432	5.1	48	57	55	160
49.5	42.0	49.1	46.9	824	684	833	2,341	4.1	181	152	189	522
39.5	29.3	36.6	35.2	281	220	255	756	3.2	41	31	36	108
47.0	38.9	46.0	44.0	1,105	904	1,088	3,097	3.9	222	184	225	630
61.9	50.2	44.6	52.3	3,095	2,481	2,422	7,998	4.7	1,025	799	772	2,596
68.9	43.0	37.4	49.8	1,551	877	805	3,233	5.2	828	529	338	1,695
73.3	52.9	46.6	57.6	2,042	1,662	1,543	5,247	4.2	1,196	995	928	3,120
26.1	21.8	31.6	26.6	204	173	293	670	2.7	47	42	63	152
64.7	48.0	42.9	51.9	6,892	5,193	5,063	17,148	4.5	3,096	2,365	2,101	7,562
43.1	43.7	44.1	43.7	427	364	357	1,148	2.0	39	25	41	95
63.0	55.0	60.3	59.5	61,034	50,870	55,376	167,280	5.9	22,329	18,141	24,551	65,020

TABLE 10—CARAVAN PARKS BY STATISTICAL DIVISION, QUEENSLAND

Particulars	Brisbane (SD)			Moreton (SD)			Wide Bay-Burnett (SD)		
	Short-term	Long-term	Total	Short-term	Long-term	Total	Short-term	Long-term	Total
ESTABLISHMENTS, CAPACITY AND EMPLOYMENT									
<i>December quarter 1993—</i>									
Establishments	9	68	77	33	78	111	35	60	95
Capacity									
On-site vans	42	1,302	1,344	101	1,066	1,167	170	513	683
Other powered sites	266	5,203	5,469	3,164	5,250	8,414	2,276	2,529	4,805
Unpowered sites	1,023	445	1,468	1,903	1,236	3,139	1,218	734	1,952
Cabins, flats, etc.	28	495	523	211	558	769	178	257	435
<i>Total capacity</i>	<i>1,359</i>	<i>7,445</i>	<i>8,804</i>	<i>5,379</i>	<i>8,110</i>	<i>13,489</i>	<i>3,842</i>	<i>4,033</i>	<i>7,875</i>
Sites occupied by long-term guests	92	4,933	5,025	473	3,876	4,349	357	1,306	1,663
Other sites permanently reserved	174	57	231	284	243	527	130	84	214
Employment (persons)	24	291	315	170	319	489	105	175	280
<i>December quarter 1994—</i>									
Establishments	9	67	76	35	73	108	37	58	95
Capacity									
On-site vans	54	1,326	1,380	104	978	1,082	192	488	680
Other powered sites	275	5,175	5,450	3,052	4,995	8,047	2,204	2,603	4,807
Unpowered sites	919	331	1,250	2,190	870	3,060	1,160	904	2,064
Cabins, flats, etc.	31	593	624	218	559	777	198	236	434
<i>Total capacity</i>	<i>1,279</i>	<i>7,425</i>	<i>8,704</i>	<i>5,564</i>	<i>7,402</i>	<i>12,966</i>	<i>3,754</i>	<i>4,231</i>	<i>7,985</i>
Sites occupied by long-term guests	94	4,964	5,058	474	3,816	4,290	347	1,292	1,639
Other sites permanently reserved	198	45	243	229	267	496	145	60	205
Employment (persons)	25	297	322	199	307	506	127	186	313
SITE NIGHTS OCCUPIED									
<i>December quarter 1993</i>	<i>42,192</i>	<i>496,410</i>	<i>538,602</i>	<i>195,630</i>	<i>448,389</i>	<i>644,019</i>	<i>107,271</i>	<i>166,839</i>	<i>274,110</i>
<i>1994</i>									
October	12,285	170,672	182,957	59,121	150,863	209,984	35,533	54,068	89,601
November	13,043	164,623	177,666	54,520	144,836	199,356	32,437	50,948	83,385
December	17,241	172,297	189,538	77,789	154,754	232,543	41,503	55,607	97,110
<i>December quarter 1994</i>	<i>42,569</i>	<i>507,592</i>	<i>550,161</i>	<i>191,430</i>	<i>450,453</i>	<i>641,883</i>	<i>109,473</i>	<i>160,623</i>	<i>270,096</i>
SITE OCCUPANCY RATES (per cent)									
<i>December quarter 1993</i>	<i>34.6</i>	<i>72.5</i>	<i>66.7</i>	<i>39.5</i>	<i>60.1</i>	<i>51.9</i>	<i>30.3</i>	<i>45.0</i>	<i>37.8</i>
<i>1994</i>									
October	31.0	74.1	67.8	35.0	65.7	52.7	30.5	41.2	36.2
November	34.0	73.9	68.0	32.7	65.2	51.3	28.8	40.1	34.8
December	43.5	75.0	70.3	45.1	67.4	57.9	35.7	42.4	39.2
<i>December quarter 1994</i>	<i>36.2</i>	<i>74.3</i>	<i>68.7</i>	<i>37.6</i>	<i>66.1</i>	<i>54.0</i>	<i>31.7</i>	<i>41.3</i>	<i>36.8</i>
TAKINGS FROM ACCOMMODATION (\$'000)									
<i>December quarter 1993</i>	<i>370</i>	<i>4,548</i>	<i>4,918</i>	<i>2,517</i>	<i>4,614</i>	<i>7,131</i>	<i>1,163</i>	<i>1,441</i>	<i>2,605</i>
<i>1994—</i>									
October	98	1,563	1,661	789	1,608	2,397	387	526	913
November	112	1,493	1,605	741	1,481	2,223	342	475	817
December	174	1,650	1,823	994	1,718	2,712	457	551	1,008
<i>December quarter 1994</i>	<i>384</i>	<i>4,706</i>	<i>5,090</i>	<i>2,524</i>	<i>4,808</i>	<i>7,332</i>	<i>1,187</i>	<i>1,552</i>	<i>2,739</i>

TABLE 10—CARAVAN PARKS BY STATISTICAL DIVISION, QUEENSLAND—continued

Particulars	Darling Downs (SD)			South-West (SD)			Fitzroy (SD)		
	Short-term	Long-term	Total	Short-term	Long-term	Total	Short-term	Long-term	Total
ESTABLISHMENTS, CAPACITY AND EMPLOYMENT									
<i>December quarter 1993—</i>									
Establishments	12	31	43	7	10	17	34	37	71
Capacity									
On-site vans	84	253	337	25	56	81	122	480	602
Other powered sites	294	911	1,205	129	235	364	1,089	1,978	3,067
Unpowered sites	384	430	814	377	85	462	777	410	1,187
Cabins, flats, etc.	48	89	137	2	17	19	145	241	386
<i>Total capacity</i>	<i>810</i>	<i>1,683</i>	<i>2,493</i>	<i>533</i>	<i>393</i>	<i>926</i>	<i>2,133</i>	<i>3,109</i>	<i>5,242</i>
Sites occupied by long-term guests	53	435	488	8	90	98	212	1,123	1,335
Other sites permanently reserved	11	11	22	—	4	4	26	34	60
Employment (persons)	27	69	96	18	15	33	112	143	255
<i>December quarter 1994—</i>									
Establishments	13	30	43	6	12	18	32	40	72
Capacity									
On-site vans	93	243	336	27	64	91	103	505	608
Other powered sites	365	856	1,221	103	267	370	1,047	1,996	3,043
Unpowered sites	434	392	826	173	81	254	596	404	1,000
Cabins, flats, etc.	75	70	145	2	20	22	141	255	396
<i>Total capacity</i>	<i>967</i>	<i>1,561</i>	<i>2,528</i>	<i>305</i>	<i>432</i>	<i>737</i>	<i>1,887</i>	<i>3,160</i>	<i>5,047</i>
Sites occupied by long-term guests	76	374	450	5	89	94	179	1,034	1,213
Other sites permanently reserved	1	7	8	1	1	2	39	38	77
Employment (persons)	29	63	92	11	19	30	115	146	261
SITE NIGHTS OCCUPIED									
<i>December quarter 1993</i>	<i>11,489</i>	<i>51,213</i>	<i>62,702</i>	<i>2,937</i>	<i>10,714</i>	<i>13,651</i>	<i>48,279</i>	<i>130,366</i>	<i>178,645</i>
<i>1994—</i>									
October	5,588	15,597	21,185	662	4,025	4,687	15,204	41,555	56,759
November	4,339	14,014	18,353	472	3,353	3,825	12,837	38,671	51,508
December	4,558	14,303	18,861	424	3,527	3,951	15,223	40,865	56,088
<i>December quarter 1994</i>	<i>14,485</i>	<i>43,914</i>	<i>58,399</i>	<i>1,558</i>	<i>10,905</i>	<i>12,463</i>	<i>43,264</i>	<i>121,091</i>	<i>164,355</i>
SITE OCCUPANCY RATES (per cent)									
<i>December quarter 1993</i>	<i>15.4</i>	<i>33.1</i>	<i>27.3</i>	<i>6.0</i>	<i>29.6</i>	<i>16.0</i>	<i>24.6</i>	<i>45.6</i>	<i>37.0</i>
<i>1994—</i>									
October	18.6	32.2	27.0	7.0	30.1	20.5	26.0	42.4	36.3
November	15.0	29.9	24.2	5.2	25.9	17.3	22.7	40.8	34.0
December	15.2	29.6	24.1	4.5	26.3	17.3	26.0	41.7	35.8
<i>December quarter 1994</i>	<i>16.3</i>	<i>30.6</i>	<i>25.1</i>	<i>5.6</i>	<i>27.4</i>	<i>18.4</i>	<i>24.9</i>	<i>41.7</i>	<i>35.4</i>
TAKINGS FROM ACCOMMODATION (\$'000)									
<i>December quarter 1993</i>	<i>122</i>	<i>478</i>	<i>600</i>	<i>23</i>	<i>89</i>	<i>112</i>	<i>557</i>	<i>1,221</i>	<i>1,778</i>
<i>1994—</i>									
October	73	131	204	10	36	45	176	412	587
November	52	121	173	5	30	35	141	376	518
December	57	122	179	7	31	38	183	435	618
<i>December quarter 1994</i>	<i>183</i>	<i>373</i>	<i>556</i>	<i>22</i>	<i>97</i>	<i>119</i>	<i>500</i>	<i>1,223</i>	<i>1,723</i>

TABLE 10 — CARAVAN PARKS BY STATISTICAL DIVISION, QUEENSLAND—continued

Particulars	Central-West (SD)			Mackay (SD)			Northern (SD)		
	Short-term	Long-term	Total	Short-term	Long-term	Total	Short-term	Long-term	Total
ESTABLISHMENTS, CAPACITY AND EMPLOYMENT									
<i>December quarter 1993—</i>									
Establishments	10	—	10	17	28	45	15	29	44
Capacity									
On-site vans	53	—	53	120	239	359	122	262	384
Other powered sites	304	—	304	500	1,678	2,178	646	1,498	2,144
Unpowered sites	411	—	411	250	446	696	259	516	775
Cabins, flats, etc.	42	—	42	132	118	250	79	129	208
<i>Total capacity</i>	<i>810</i>		<i>810</i>	<i>1,002</i>	<i>2,481</i>	<i>3,483</i>	<i>1,106</i>	<i>2,405</i>	<i>3,511</i>
Sites occupied by long-term guests	23	—	23	69	735	804	124	802	926
Other sites permanently reserved	4	—	4	11	6	17	6	13	19
Employment (persons)	21	—	21	60	81	141	63	102	165
<i>December quarter 1994</i>									
Establishments	10	—	10	18	29	47	13	30	43
Capacity									
On-site vans	48	—	48	118	263	381	107	234	341
Other powered sites	314	—	314	606	1,731	2,337	586	1,550	2,136
Unpowered sites	295	—	295	253	432	685	177	541	718
Cabins, flats, etc.	51	—	51	143	158	301	47	187	234
<i>Total capacity</i>	<i>708</i>		<i>708</i>	<i>1,120</i>	<i>2,584</i>	<i>3,704</i>	<i>917</i>	<i>2,512</i>	<i>3,429</i>
Sites occupied by long-term guests	16	—	16	53	709	762	87	804	891
Other sites permanently reserved	4	—	4	75	16	91	4	6	10
Employment (persons)	24	—	24	67	86	153	53	108	161
SITE NIGHTS OCCUPIED									
<i>December quarter 1993</i>	<i>5,827</i>	—	<i>5,827</i>	<i>28,618</i>	<i>82,802</i>	<i>111,420</i>	<i>29,513</i>	<i>95,824</i>	<i>125,337</i>
<i>1994—</i>									
October	2,813	—	2,813	10,844	28,800	39,644	12,312	36,171	48,483
November	1,624	—	1,624	10,377	27,065	37,442	9,385	34,267	43,652
December	1,541	—	1,541	11,318	29,197	40,515	9,100	31,898	40,998
<i>December quarter 1994</i>	<i>5,978</i>	—	<i>5,978</i>	<i>32,539</i>	<i>85,062</i>	<i>117,601</i>	<i>30,797</i>	<i>102,336</i>	<i>133,133</i>
SITE OCCUPANCY RATES (per cent)									
<i>December quarter 1993</i>	<i>7.8</i>	—	<i>7.8</i>	<i>31.0</i>	<i>36.3</i>	<i>34.8</i>	<i>29.0</i>	<i>43.3</i>	<i>38.8</i>
<i>1994—</i>									
October	12.8	—	12.8	31.2	36.0	34.5	43.3	46.4	45.6
November	7.6	—	7.6	30.9	34.9	33.7	34.1	45.5	42.4
December	7.0	—	7.0	32.6	36.4	35.3	32.0	41.0	38.6
<i>December quarter 1994</i>	<i>9.2</i>	—	<i>9.2</i>	<i>31.6</i>	<i>35.8</i>	<i>34.5</i>	<i>36.5</i>	<i>44.3</i>	<i>42.2</i>
TAKINGS FROM ACCOMMODATION (\$'000)									
<i>December quarter 1993</i>	<i>91</i>	—	<i>91</i>	<i>470</i>	<i>748</i>	<i>1,218</i>	<i>397</i>	<i>913</i>	<i>1,309</i>
<i>1994—</i>									
October	53	—	53	151	268	420	135	386	521
November	22	—	22	160	251	411	105	373	478
December	27	—	27	198	265	463	93	363	457
<i>December quarter 1994</i>	<i>102</i>	—	<i>102</i>	<i>509</i>	<i>784</i>	<i>1,293</i>	<i>334</i>	<i>1,122</i>	<i>1,456</i>



TABLE 10 — CARAVAN PARKS BY STATISTICAL DIVISION, QUEENSLAND—continued

Particulars	Far North (SD)			North-West (SD)			Queensland		
	Short-term	Long-term	Total	Short-term	Long-term	Total	Short-term	Long-term	Total
<b>ESTABLISHMENTS, CAPACITY AND EMPLOYMENT</b>									
<i>December quarter 1993—</i>									
Establishments	46	46	92	13	11	24	231	398	629
Capacity									
On-site vans	211	487	698	30	70	100	1,080	4,728	5,808
Other powered sites	1,734	1,906	3,640	390	647	1,037	10,792	21,835	32,627
Unpowered sites	1,486	878	2,364	302	233	535	8,390	5,413	13,803
Cabins, flats, etc.	303	315	618	39	18	57	1,207	2,237	3,444
<i>Total capacity</i>	<i>3,734</i>	<i>3,586</i>	<i>7,320</i>	<i>761</i>	<i>968</i>	<i>1,729</i>	<i>21,469</i>	<i>34,213</i>	<i>55,682</i>
Sites occupied by long-term guests	302	1,053	1,355	39	334	373	1,752	14,687	16,439
Other sites permanently reserved	38	50	88	—	—	—	684	502	1,186
Employment (persons)	175	154	329	36	23	59	811	1,372	2,183
<i>December quarter 1994—</i>									
Establishments	48	45	93	17	9	26	238	393	631
Capacity									
On-site vans	173	535	708	39	68	107	1,058	4,704	5,762
Other powered sites	1,767	1,889	3,656	479	582	1,061	10,798	21,644	32,442
Unpowered sites	1,255	896	2,151	484	124	608	7,936	4,975	12,911
Cabins, flats, etc.	356	308	664	51	18	69	1,313	2,404	3,717
<i>Total capacity</i>	<i>3,551</i>	<i>3,628</i>	<i>7,179</i>	<i>1,053</i>	<i>792</i>	<i>1,845</i>	<i>21,105</i>	<i>33,727</i>	<i>54,832</i>
Sites occupied by long-term guests	368	993	1,361	45	307	352	1,744	14,382	16,126
Other sites permanently reserved	26	39	65	1	1	2	723	480	1,203
Employment (persons)	185	140	325	53	16	69	888	1,368	2,256
<b>SITE NIGHTS OCCUPIED</b>									
<i>December quarter 1993</i>	<i>84,825</i>	<i>140,067</i>	<i>224,892</i>	<i>8,772</i>	<i>36,507</i>	<i>45,279</i>	<i>565,353</i>	<i>1,659,131</i>	<i>2,224,484</i>
<i>1994—</i>									
October	36,705	45,648	82,353	3,622	11,397	15,019	194,689	558,796	753,485
November	29,375	42,599	71,974	2,879	10,668	13,547	171,288	531,044	702,332
December	28,624	43,987	72,611	2,882	10,311	13,193	210,203	556,746	766,949
<i>December quarter 1994</i>	<i>94,704</i>	<i>132,234</i>	<i>226,938</i>	<i>9,383</i>	<i>32,376</i>	<i>41,759</i>	<i>576,180</i>	<i>1,646,586</i>	<i>2,222,766</i>
<b>SITE OCCUPANCY RATES (per cent)</b>									
December quarter 1993	24.7	42.5	33.4	12.5	41.0	28.5	28.7	52.7	43.4
<i>1994—</i>									
October	33.3	40.6	37.0	11.1	46.4	26.3	29.9	53.4	44.4
November	27.6	39.1	33.4	9.1	44.9	24.5	27.1	52.5	42.7
December	26.0	39.1	32.6	8.8	42.0	23.1	32.1	53.3	45.1
December quarter 1994	29.0	39.6	34.4	9.7	44.4	24.6	29.7	53.1	44.1
<b>TAKINGS FROM ACCOMMODATION (\$'000)</b>									
<i>December quarter 1993</i>	<i>1,145</i>	<i>1,557</i>	<i>2,703</i>	<i>97</i>	<i>369</i>	<i>466</i>	<i>6,953</i>	<i>15,979</i>	<i>22,931</i>
<i>1994—</i>									
October	533	514	1,047	43	120	163	2,448	5,564	8,012
November	418	479	898	32	111	143	2,132	5,191	7,323
December	417	503	920	34	111	145	2,641	5,749	8,391
<i>December quarter 1994</i>	<i>1,368</i>	<i>1,497</i>	<i>2,865</i>	<i>109</i>	<i>343</i>	<i>451</i>	<i>7,221</i>	<i>16,504</i>	<i>23,725</i>

TABLE 11 — CARAVAN PARKS: STATISTICAL DIVISIONS AND SELECTED SUBDIVISIONS

Statistical Divisions and Selected Subdivisions and Statistical Local Areas	Capacity					Total	Sites occupied by long-term guests	Other sites permanently reserved	Employment (persons)
	Establishments	On-site vans	Other powered sites	Unpowered sites	Cabins, flats, etc.				
Albert (S) — Part A	4	28	353	30	16	427	249	—	18
Brisbane City (SSD)									
Aspley	3	89	410	2	71	572	392	—	30
Eight Mile Plains	4	229	472	35	61	797	448	3	26
Balance	17	318	1,843	37	104	2,302	1,561	2	88
Total	24	636	2,725	74	236	3,671	2,401	5	144
Caboolture (S) — Part A	5	151	336	23	20	530	347	2	17
Ipswich (C)	4	122	260	4	45	431	314	—	20
Logan City (SSD)	12	259	677	70	149	1,155	819	5	46
Redcliffe City (SSD)	10	78	323	33	23	457	276	16	34
Redland Shire (SSD)	13	72	481	996	51	1,600	295	215	31
Balance	4	34	295	20	84	433	357	—	12
<i>Brisbane (SD)</i>	<i>76</i>	<i>1,380</i>	<i>5,450</i>	<i>1,250</i>	<i>624</i>	<i>8,704</i>	<i>5,058</i>	<i>243</i>	<i>322</i>
Albert (S) — Part B	9	204	818	88	22	1,132	728	10	44
Caboolture (S) — Part B	8	50	855	47	39	991	486	148	39
Caloundra (C) — Parts A and B	16	103	867	307	133	1,410	508	107	58
Esk (S)	4	31	133	150	8	322	40	7	7
Gold Coast City (SSD)									
Labrador	4	65	374	201	59	699	265	—	24
Balance	15	176	2,201	189	145	2,711	1,121	112	90
Total	19	241	2,575	390	204	3,410	1,386	112	114
Maroochy (S) — Parts A and B	25	210	1,768	457	204	2,639	768	105	111
Noosa (S) — Parts A and B	12	67	500	962	81	1,610	114	7	81
Balance	15	176	531	659	86	1,452	260	—	52
<i>Moreton (SD)</i>	<i>108</i>	<i>1,082</i>	<i>8,047</i>	<i>3,060</i>	<i>777</i>	<i>12,966</i>	<i>4,290</i>	<i>496</i>	<i>506</i>
Bundaberg (C)	7	93	446	14	109	662	296	—	24
Burnett (S) — Parts A and B	10	61	672	501	32	1,266	234	18	30
Cooloolta (S)	10	90	586	349	50	1,075	167	48	41
Hervey Bay (C)	25	172	1,783	355	109	2,419	586	40	91
Isis (S)	3	31	138	12	17	198	45	7	14
Maryborough (C)	9	48	290	190	37	565	165	16	24
Miriam Vale (S)	6	25	219	83	30	357	28	52	21
Nanango (S)	5	60	164	24	11	259	34	6	10
Balance	20	100	509	536	39	1,184	84	18	58
<i>Wide Bay-Burnett (SD)</i>	<i>95</i>	<i>680</i>	<i>4,807</i>	<i>2,064</i>	<i>434</i>	<i>7,985</i>	<i>1,639</i>	<i>205</i>	<i>313</i>
Goondiwindi (T)	3	24	90	20	32	166	43	—	6
Inglewood (S)	5	18	104	29	8	159	14	—	7
Murilla (S)	4	20	84	57	4	165	19	—	7
Toowoomba (C)	5	64	259	40	26	389	179	—	20
Warwick (S)	5	44	125	164	30	363	26	2	10
Balance	21	166	559	516	45	1,286	169	6	42
<i>Darling Downs (SD)</i>	<i>43</i>	<i>336</i>	<i>1,221</i>	<i>826</i>	<i>145</i>	<i>2,528</i>	<i>450</i>	<i>8</i>	<i>92</i>
Balonne (S)	3	22	44	3	3	72	10	—	4
Balance	15	69	326	251	19	665	84	2	26
<i>South-West (SD)</i>	<i>18</i>	<i>91</i>	<i>370</i>	<i>254</i>	<i>22</i>	<i>737</i>	<i>94</i>	<i>2</i>	<i>30</i>

## AND STATISTICAL LOCAL AREAS, QUEENSLAND, DECEMBER QUARTER 1994

<i>Site nights occupied</i>				<i>Site occupancy rates (per cent)</i>				<i>Takings from accommodation (\$ '000)</i>			
<i>Oct.</i>	<i>Nov.</i>	<i>Dec.</i>	<i>Dec. qtr</i>	<i>Oct.</i>	<i>Nov.</i>	<i>Dec.</i>	<i>Dec. qtr</i>	<i>Oct.</i>	<i>Nov.</i>	<i>Dec.</i>	<i>Dec. qtr</i>
8,832	8,403	8,609	25,844	66.7	65.6	65.0	65.8	66	63	66	195
13,781	13,231	13,377	40,389	77.7	77.1	75.4	76.8	151	145	160	456
16,448	15,859	16,475	48,782	66.6	66.3	66.7	66.5	172	170	182	524
52,815	50,945	55,488	159,248	74.0	73.8	77.8	75.2	494	454	528	1,477
83,044	80,035	85,340	248,419	73.0	72.7	75.0	73.6	817	769	869	2,456
12,229	11,586	12,315	36,130	74.4	72.9	75.0	74.1	114	110	127	351
10,327	10,053	10,427	30,807	77.3	77.7	78.0	77.7	88	92	91	271
28,333	27,016	27,778	83,127	79.1	78.0	77.6	78.2	235	222	247	705
11,236	11,193	11,265	33,694	79.3	81.6	81.2	80.7	99	96	98	294
17,518	18,285	22,555	58,358	35.3	38.1	45.5	39.6	137	151	208	496
11,438	11,095	11,249	33,782	85.2	85.4	83.8	84.8	105	101	117	323
182,957	177,666	189,538	550,161	67.8	68.0	70.3	68.7	1,661	1,605	1,823	5,090
26,459	25,340	26,995	78,794	75.4	74.6	76.9	75.7	279	248	288	814
21,809	20,814	22,460	65,083	71.0	70.0	73.1	71.4	199	182	264	645
25,247	24,498	26,788	76,533	57.8	57.9	61.3	59.0	257	238	341	836
1,865	1,539	1,590	4,994	18.7	15.9	15.9	16.9	17	13	14	44
12,212	11,287	14,398	37,897	56.4	53.8	66.4	58.9	186	159	189	533
50,251	48,103	57,798	156,152	62.3	59.1	68.8	63.5	615	551	680	1,846
62,463	59,390	72,196	194,049	61.0	58.1	68.3	62.5	800	710	869	2,379
44,196	42,209	52,098	138,503	54.0	53.3	63.7	57.0	542	571	585	1,698
13,285	12,401	17,909	43,595	26.6	25.7	35.9	29.4	159	141	226	526
14,660	13,165	12,507	40,332	32.6	30.2	27.8	30.2	144	120	125	389
209,984	199,356	232,543	641,883	52.7	51.3	57.9	54.0	2,397	2,223	2,712	7,332
13,077	12,685	13,401	39,163	63.7	63.9	65.3	64.3	129	119	124	372
13,997	13,233	16,074	43,304	35.7	34.8	41.0	37.2	110	108	147	365
10,446	10,605	12,671	33,722	31.3	32.9	38.0	34.1	112	109	129	351
30,396	26,758	33,446	90,600	40.5	36.9	44.6	40.7	340	285	387	1,012
3,329	2,739	2,920	8,988	54.2	46.1	47.6	49.3	43	31	37	111
7,164	6,733	7,272	21,169	40.9	39.7	41.5	40.7	65	57	66	189
4,566	4,387	4,916	13,869	41.3	41.0	44.4	42.2	53	52	57	162
1,634	1,572	1,661	4,867	20.4	20.2	20.7	20.4	13	13	14	40
4,992	4,673	4,749	14,414	13.6	13.2	12.9	13.2	47	44	46	136
89,601	83,385	97,110	270,096	36.2	34.8	39.2	36.8	913	817	1,008	2,739
1,965	1,762	1,955	5,682	38.2	35.4	38.0	37.2	23	21	22	66
570	515	548	1,633	11.6	10.8	11.1	11.2	4	4	4	12
1,001	892	752	2,645	19.6	18.0	14.7	17.4	7	6	6	19
7,968	6,948	6,816	21,732	66.1	59.5	56.5	60.7	81	67	68	215
1,789	1,279	1,404	4,472	15.9	11.7	12.5	13.4	21	15	14	50
7,892	6,957	7,386	22,235	19.8	18.0	18.5	18.8	69	60	65	194
21,185	18,353	18,861	58,399	27.0	24.2	24.1	25.1	204	173	179	556
628	529	633	1,790	28.1	24.5	28.4	27.0	8	6	7	21
4,059	3,296	3,318	10,673	19.7	16.5	16.1	17.4	38	29	31	98
4,687	3,825	3,951	12,463	20.5	17.3	17.3	18.4	45	35	38	119

TABLE 11 — CARAVAN PARKS: STATISTICAL DIVISIONS AND SELECTED SUBDIVISIONS

Statistical Divisions and Selected Subdivisions and Statistical Local Areas	Capacity					Total	Sites occupied by long-term guests	Other sites permanently reserved	Employment (persons)
	Establishments	On-site vans	Other powered sites	Unpowered sites	Cabins, flats, etc.				
Banana (S)	8	98	250	94	18	460	63	1	22
Calliope (S) — Parts A and B	9	63	512	161	26	762	205	8	29
Emerald (S)	15	107	510	145	84	846	190	11	56
Gladstone (C)	7	83	280	49	41	453	239	—	25
Livingstone (S)	11	47	480	281	66	874	182	35	40
Rockhampton (C)	7	103	545	105	140	893	204	16	48
Balance	15	107	466	165	21	759	130	6	41
<i>Fitzroy (SD)</i>	<i>72</i>	<i>608</i>	<i>3,043</i>	<i>1,000</i>	<i>396</i>	<i>5,047</i>	<i>1,213</i>	<i>77</i>	<i>261</i>
<i>Central-West (SD)</i>	<i>10</i>	<i>48</i>	<i>314</i>	<i>295</i>	<i>51</i>	<i>708</i>	<i>16</i>	<i>4</i>	<i>24</i>
Belyando (S)	4	14	344	35	13	406	118	2	8
Broadsound (S)	3	9	177	36	11	233	19	3	5
Mirani (S)	4	18	108	42	3	171	37	2	9
Mackay (C) — Parts A and B	16	181	918	230	144	1,473	387	7	61
Sarina (S)	7	52	194	60	14	320	86	5	17
Whitsunday (S)	13	107	596	282	116	1,101	115	72	53
<i>Mackay (SD)</i>	<i>47</i>	<i>381</i>	<i>2,337</i>	<i>685</i>	<i>301</i>	<i>3,704</i>	<i>762</i>	<i>91</i>	<i>153</i>
Bowen (S)	11	134	528	149	22	833	147	—	33
Burdekin (S)	7	31	242	133	32	438	107	3	21
Dalrymple (S)	5	11	102	38	25	176	7	—	13
Hinchinbrook (S)	5	20	254	100	19	393	35	7	19
Townsville (C)	10	118	772	197	95	1,182	455	—	55
Balance	5	27	238	101	41	407	140	—	20
<i>Northern (SD)</i>	<i>43</i>	<i>341</i>	<i>2,136</i>	<i>718</i>	<i>234</i>	<i>3,429</i>	<i>891</i>	<i>10</i>	<i>161</i>
Atherton (S)	5	49	218	149	35	451	102	16	13
Cairns (C)	4	59	369	129	101	658	258	—	30
Cardwell (S)	12	104	429	228	74	835	98	13	47
Douglas (S)	11	44	465	245	78	832	130	3	46
Eacham (S)	4	2	90	155	33	280	26	10	13
Etheridge (S)	3	7	69	45	12	133	2	—	6
Herberton (S)	5	18	79	160	18	275	20	—	16
Johnstone (S)	13	92	454	294	47	887	121	4	33
Mareeba (S)	9	75	229	103	40	447	107	3	20
Mulgrave (S) — Parts A and B	19	232	1,025	251	205	1,713	453	16	81
Balance	8	26	229	392	21	668	44	—	20
<i>Far North (SD)</i>	<i>93</i>	<i>708</i>	<i>3,656</i>	<i>2,151</i>	<i>664</i>	<i>7,179</i>	<i>1,361</i>	<i>65</i>	<i>325</i>
Carpentaria (S)	4	10	191	122	28	351	15	1	9
Mount Isa (C)	10	65	582	150	28	825	303	1	24
Balance	12	32	288	336	13	669	34	—	36
<i>North-West (SD)</i>	<i>26</i>	<i>107</i>	<i>1,061</i>	<i>608</i>	<i>69</i>	<i>1,845</i>	<i>352</i>	<i>2</i>	<i>69</i>
<i>Queensland</i>									
Short-term parks	238	1,058	10,798	7,936	1,313	21,105	1,744	723	888
Long-term parks	393	4,704	21,644	4,975	2,404	33,727	14,382	480	1,368
Total	631	5,762	32,442	12,911	3,717	54,832	16,126	1,203	2,256
Albert (S) (a)	13	232	1,171	118	38	1,559	977	10	62
Beaudesert (S) (a)	5	28	175	142	49	394	151	—	30
Caboolture (S) (a)	13	201	1,191	70	59	1,521	833	150	56
Sunshine Coast Statistical District (b)	36	221	2,813	1,000	310	4,344	1,103	216	193

(a) Albert, Beaudesert and Caboolture Shires straddle the boundary line between Brisbane and Moreton Statistical Divisions. (b) Sunshine Coast Statistical District comprises the more urban coastal portions of Caloundra City and Maroochy and Noosa Shires.

## AND STATISTICAL LOCAL AREAS, QUEENSLAND, DECEMBER QUARTER 1994—continued

<i>Site nights occupied</i>				<i>Site occupancy rates (per cent)</i>				<i>Takings from accommodation (\$ '000)</i>			
<i>Oct.</i>	<i>Nov.</i>	<i>Dec.</i>	<i>Dec. qtr</i>	<i>Oct.</i>	<i>Nov.</i>	<i>Dec.</i>	<i>Dec. qtr</i>	<i>Oct.</i>	<i>Nov.</i>	<i>Dec.</i>	<i>Dec. qtr</i>
2,590	2,658	2,391	7,639	18.2	19.3	16.8	18.1	28	26	22	76
8,001	7,429	9,018	24,448	33.9	32.5	38.2	34.9	82	75	98	255
10,556	9,937	9,728	30,221	40.3	39.2	37.1	38.8	102	106	108	317
9,069	8,458	8,720	26,247	64.6	62.2	62.1	63.0	85	75	82	241
10,661	9,101	11,578	31,340	39.3	34.7	42.7	39.0	109	91	127	327
10,456	9,283	9,912	29,651	37.8	34.7	35.8	36.1	136	111	139	386
5,426	4,642	4,741	14,809	23.1	20.4	20.1	21.2	45	35	42	121
56,759	51,508	56,088	164,355	36.3	34.0	35.8	35.4	587	518	618	1,723
2,813	1,624	1,541	5,978	12.8	7.6	7.0	9.2	53	22	27	102
4,230	4,080	4,227	12,537	33.6	33.5	33.6	33.6	25	26	26	78
1,187	1,021	1,109	3,317	16.4	14.6	15.4	15.5	12	12	16	39
1,648	1,347	1,283	4,278	31.1	26.3	24.2	27.2	10	8	8	26
18,007	16,570	17,203	51,780	39.4	37.5	37.7	38.2	202	179	193	574
3,761	3,540	3,521	10,822	37.9	36.9	35.5	36.8	37	36	32	106
10,811	10,884	13,172	34,867	31.7	33.0	38.6	34.4	133	149	188	470
39,644	37,442	40,515	117,601	34.5	33.7	35.3	34.5	420	411	463	1,293
11,045	8,983	6,510	26,538	42.8	35.9	25.2	34.6	111	84	66	261
5,208	4,898	4,255	14,361	38.4	37.3	31.3	35.6	47	51	45	142
514	464	502	1,480	9.4	8.8	9.2	9.1	5	5	5	15
4,974	3,736	4,161	12,871	40.8	31.7	34.2	35.6	27	22	24	73
21,634	20,865	20,872	63,371	59.0	58.8	57.0	58.3	278	263	266	806
5,108	4,706	4,698	14,512	40.5	38.5	37.2	38.8	53	53	52	158
48,483	43,652	40,998	133,133	45.6	42.4	38.6	42.2	521	478	457	1,456
4,661	4,315	4,467	13,443	33.3	31.9	32.0	32.4	52	44	51	147
12,092	11,477	11,613	35,182	59.3	58.1	56.9	58.1	157	146	148	451
7,292	6,178	6,554	20,024	28.2	24.7	25.3	26.1	95	80	91	266
10,828	8,322	7,877	27,027	42.0	33.3	30.5	35.3	155	111	91	357
2,076	2,030	2,305	6,411	23.9	24.2	26.6	24.9	23	19	24	66
240	119	95	454	5.8	3.0	2.3	3.7	2	2	2	5
688	719	718	2,125	8.1	8.7	8.4	8.4	5	4	5	14
6,855	5,453	6,212	18,520	24.9	20.5	22.6	22.7	74	60	66	200
5,433	4,818	5,093	15,344	39.2	35.9	36.8	37.3	58	48	54	160
27,627	25,343	25,073	77,843	52.0	48.9	47.2	49.4	386	356	361	1,102
4,561	3,400	2,604	10,565	22.0	17.0	12.6	17.2	41	28	28	96
82,353	71,974	72,611	226,938	37.0	33.4	32.6	34.4	1,047	898	920	2,865
1,313	1,236	1,294	3,843	12.1	11.7	11.9	11.9	13	12	13	38
11,406	10,649	10,387	32,442	44.6	43.0	40.6	42.7	121	111	112	344
2,300	1,662	1,512	5,474	11.1	8.3	7.3	8.9	29	20	21	69
15,019	13,547	13,193	41,759	26.3	24.5	23.1	24.6	163	143	145	451
194,689	171,288	210,203	576,180	29.9	27.1	32.1	29.7	2,448	2,132	2,641	7,221
558,796	531,044	556,746	1,646,586	53.4	52.5	53.3	53.1	5,564	5,191	5,749	16,504
753,485	702,332	766,949	2,222,766	44.4	42.7	45.1	44.1	8,012	7,323	8,391	23,725
35,291	33,743	35,604	104,638	73.0	72.1	73.7	73.0	345	311	354	1,010
5,962	5,665	5,967	17,594	48.8	47.9	48.9	48.5	70	60	70	201
34,038	32,400	34,775	101,213	72.2	71.0	73.8	72.3	313	292	391	996
68,863	66,383	81,339	216,585	51.1	50.9	60.4	54.2	820	818	984	2,622

TABLE 12 — VISITOR HOSTELS BY STATISTICAL DIVISION, QUEENSLAND

Particulars	Brisbane (SD)	Moreton (SD)	Wide Bay- Burnett (SD)	Mackay (SD)	Northern (SD)	Far North (SD)	Balance of State	Queensland
ESTABLISHMENTS, CAPACITY AND EMPLOYMENT								
<i>December quarter 1993—</i>								
Establishments	14	18	8	13	17	36	12	118
Bed spaces	655	1,076	387	878	1,289	3,099	479	7,863
Employment (persons)	37	67	31	89	80	215	24	543
<i>December quarter 1994—</i>								
Establishments	16	15	10	12	18	38	9	118
Bed spaces	772	974	537	923	1,334	3,052	386	7,978
Employment (persons)	40	53	37	113	67	255	20	585
GUEST NIGHTS								
<i>December quarter 1993</i>	<i>31,629</i>	<i>49,554</i>	<i>25,430</i>	<i>42,589</i>	<i>46,822</i>	<i>122,198</i>	<i>21,012</i>	<i>339,234</i>
<i>1994—</i>								
October	12,965	15,010	10,017	14,769	17,533	44,592	3,586	118,472
November	11,563	16,213	10,334	15,501	16,049	44,191	3,221	117,072
December	11,951	18,652	10,201	16,438	12,970	43,207	3,717	117,136
<i>December quarter 1994</i>	<i>36,479</i>	<i>49,875</i>	<i>30,552</i>	<i>46,708</i>	<i>46,552</i>	<i>131,990</i>	<i>10,524</i>	<i>352,680</i>
BED OCCUPANCY RATES (per cent)								
December quarter 1993	55.2	50.1	71.4	52.7	39.5	42.9	47.7	47.1
<i>1994—</i>								
October	54.2	49.7	60.2	51.6	42.4	47.1	30.0	47.9
November	49.9	55.5	64.1	56.0	40.1	48.3	27.8	48.9
December	49.9	61.8	61.3	57.4	31.4	45.7	31.1	47.4
December quarter 1994	51.4	55.7	61.8	55.0	37.9	47.0	29.6	48.1
GUEST ARRIVALS								
<i>December quarter 1993</i>	<i>9,677</i>	<i>18,286</i>	<i>9,696</i>	<i>17,688</i>	<i>18,381</i>	<i>41,146</i>	<i>9,725</i>	<i>124,599</i>
<i>1994—</i>								
October	3,798	5,388	3,078	5,186	5,487	16,004	2,480	41,421
November	3,669	5,982	2,966	5,810	5,580	16,365	2,199	42,571
December	3,690	6,715	3,140	6,011	4,941	16,099	2,341	42,937
<i>December quarter 1994</i>	<i>11,157</i>	<i>18,085</i>	<i>9,184</i>	<i>17,007</i>	<i>16,008</i>	<i>48,468</i>	<i>7,020</i>	<i>126,929</i>
AVERAGE LENGTH OF STAY (days)								
December quarter 1993	3.3	2.7	2.6	2.4	2.5	3.0	2.2	2.7
<i>1994—</i>								
October	3.4	2.8	3.3	2.8	3.2	2.8	1.4	2.9
November	3.2	2.7	3.5	2.7	2.9	2.7	1.5	2.8
December	3.2	2.8	3.2	2.7	2.6	2.7	1.6	2.7
December quarter 1994	3.3	2.8	3.3	2.7	2.9	2.7	1.5	2.8
TAKINGS FROM ACCOMMODATION (\$'000)								
<i>December quarter 1993</i>	<i>377</i>	<i>588</i>	<i>243</i>	<i>478</i>	<i>436</i>	<i>1,423</i>	<i>237</i>	<i>3,782</i>
<i>1994</i>								
October	158	199	108	146	184	572	42	1,409
November	199	220	111	158	170	586	41	1,484
December	152	259	109	176	146	571	46	1,459
<i>December quarter 1994</i>	<i>508</i>	<i>677</i>	<i>329</i>	<i>480</i>	<i>500</i>	<i>1,728</i>	<i>129</i>	<i>4,352</i>

## EXPLANATORY NOTES

- \*\*\*\*\*
- INTRODUCTION**                    1    This publication contains data for Queensland from a quarterly survey of tourist accommodation establishments. The period covered by the latest survey is the 3 months ended 31 December 1994.
- SCOPE**                                2    Tourist accommodation establishments currently included in the survey comprise two groups:
- Establishments which provide predominantly short-term accommodation (i.e. for periods of less than 2 months) to the general public. These include:
    - Hotels, motels and guest houses, with facilities* being hotels licensed to operate a public bar and motels, private hotels and guest houses, all of which provide a bath (or shower) and toilet in most guest rooms and have breakfast available for guests.
    - NOTE: From December quarter 1993, hotel, motel and guest house establishments with fewer than five rooms have been formally excluded from the scope of this statistical collection. This change in scope resulted in the exclusion of 21 establishments which in the September quarter 1993 Survey aggregates represented 1.9 per cent of hotel, motel and guest house establishments but accounted for only 0.2 per cent of accommodation capacity and less than 0.1 percent of occupancy and takings.
    - Holiday flats, units and houses* (excluding establishments predominantly operated on a time share basis) which are operated by owners or managers who have sole letting rights to at least five flats, units or houses or by real estate agents for short-term letting. They are mainly self-contained in terms of cooking, bath (or shower) and toilet facilities and do not have breakfast available for guests. Data for holiday flats, units and houses include short-term owner occupation as well as paying guest occupation.
    - Visitor hostels* which provide accommodation to visitors on a bed basis (rather than by the room). This category does not include establishments providing charity type accommodation (e.g. Salvation Army hostels) nor hotels, motels and guest houses without in-room facilities which provide accommodation on a per room basis.
  - *Caravan parks* providing either predominantly short-term (i.e. for periods of less than 2 months) or predominantly long-term (i.e. for periods of 2 months or more) accommodation to the general public and which provide powered sites for caravans and toilet, shower and laundry facilities for guests.
- 3    Data collected and published for each type of establishment (other than holiday flats, units and houses) include both long-term and short-term guests at these establishments.
- 4    Establishments providing more than one type of accommodation (e.g. a motel with attached caravan park) are treated as two or more separate establishments. However, self-contained units, flats, cabins, etc. attached to hotels, motels or to caravan parks are included in the capacity for those establishments and not treated as separate holiday flat, unit or house establishments.
- DEFINITIONS**
- 5    *Number of establishments.* For hotels, motels and guest houses, caravan parks and visitor hostels, the number of establishments within the scope of the survey which operated for any part of the survey period, or which closed temporarily for the quarter for seasonal reasons.
- 6    *Number of letting entities.* For holiday flats, units and houses, the number of owners, managers or real estate agents within the scope of the survey who operated for any part of the survey period.
- 7    Capacity in terms of *Guest rooms, Bed spaces, Holiday units* or *Caravan park sites, etc.* is the maximum number available to accommodate paying guests during the survey period. Capacity closed temporarily for seasonal reasons is included.
- 8    *Bed spaces.* Three-quarter beds are counted as one bed space; double beds as two bed spaces. Cots are excluded.
- 9    *Total caravan park capacity* comprises *On-site vans, Other powered sites, Unpowered sites* and *Cabins, etc.*

EXPLANATORY NOTES—*continued*

\*\*\*\*\*

DEFINITIONS—*continued*

**10** *Room nights available.* The number of guest rooms available multiplied by the number of days for which they were available during the survey period. Includes operating periods only for establishments closing (other than for seasonal reasons) or opening during the survey period.

**11** Occupancy in terms of *Room nights, Unit nights* or *Site nights occupied* refers to the total number of nights each guest room, holiday unit or caravan park site, etc. was occupied during the survey period.

NOTE: From September quarter 1992, caravan park sites, etc. permanently reserved for 2 months or more at the end of the survey period but only casually occupied by their tenants have been recorded continuously as *Site nights occupied* irrespective of whether the tenants of individual sites were in residence on any particular night. (See also paragraph 14 below). Previously, usage of these sites was recorded as *Site nights occupied* only when their tenants were in the park. Total site occupancy rates from September quarter 1992 are therefore not comparable with those from previous quarters.

**12** Occupancy in terms of *Guest nights* refers to the total number of nights each paying guest stayed during the survey period.

**13** *Sites occupied by long-term guests.* The total number of sites, etc. occupied at the end of the survey period by guests who have stayed continuously for 2 months or more.

**14** *Other sites permanently reserved.* The total number of powered and unpowered sites, on-site vans and cabins, etc. continuously let for 2 months or more by the end of the survey period to tenants who occupy the sites only on a casual or sporadic basis. Separate data for this item are available only from September quarter 1992.

**15** *Occupancy rates* represent occupancy expressed as a percentage of total capacity available during the survey period – e.g.

$$\text{Room occupancy rate (\%)} \text{ for the period} = \frac{\text{Room nights occupied}}{(\text{Guest rooms}) \times (\text{No. of days in the period})} \times 100$$

providing that, for establishments closing (other than for seasonal reasons) or opening during the period, the denominator of the above expression includes only operating periods.

**16** *Guest arrivals.* The total number of paying guests counted only on the first night they stayed at the accommodation establishment.

**17** *Unit lettings.* The total number of times a holiday flat, unit or house was occupied by a new tenant, counted only on the first night it was occupied by the new tenant.

**18** *Average length of stay* is expressed in number of days and is calculated:

- for hotels, motels and guest houses and for visitor hostels, by dividing *Guest nights* by *Guest arrivals* and
- for holiday flats, units and houses, by dividing *Unit nights occupied* by *Unit lettings*.

**19** *Takings from accommodation.* Revenue received from the provision of accommodation. Takings from meals are excluded. Takings from accommodation for each month generally represent the takings received during that month. Where payments are received in advance of, or after, the provision of accommodation to guests, the monthly figure for takings from accommodation may not necessarily bear a direct relationship to the number of guests accommodated during the month. Rental and storage fees paid to caravan parks for the keeping of private vans in parks are included in the takings of the month they are received.

**20** *Star grading.* The grading of hotels and motels with facilities based on the classification system used by members of the Australian Automobile Association (AAA). The gradings are allocated according to a points system based on the amenities and facilities available to guests. Details of the grading scheme are contained in the RACV-RAASA members' publication *Accommodation Australia*, or the individual tour guides produced by members of the AAA. For the purpose of classifying establishments to a star grading in this publication, 'half' star gradings are ignored (e.g. a two and a half star grading has been shown as two star).



## EXPLANATORY NOTES—continued

- \*\*\*\*\*
- 21** *Employment.* The number of persons working at accommodation establishments at the end of the survey period (including working proprietors and those working on other than accommodation activities).
- AUSTRALIAN STANDARD GEOGRAPHICAL CLASSIFICATION**
- 22** Statistics presented in this publication have been classified according to the Australian Standard Geographical Classification (ASGC), Edition 2.4. This classification incorporates a number of hierarchic structures of geographic areas. The appropriate spatial units of the main structure of the ASGC used in this publication are defined as follows.
- Statistical Local Areas (SLAs)* are the smallest types of spatial units in the ASGC for which tourist accommodation data are presented. They correspond either to legal local government areas (LGAs) as defined under the *Local Government Act 1936* or to suburbs in certain urban LGAs. Some LGAs are split into two or more parts, with each part forming a separate SLA. In all instances, LGA data can be derived by aggregating SLAs. The unincorporated area of Queensland also forms a SLA. In aggregate, SLAs cover the whole of the State without gaps or overlaps.
- Statistical Subdivisions (SSDs)* consist of one or more SLAs and form the intermediate size spatial unit for the presentation of regional data.
- Statistical Divisions (SDs)*, which consist of one or more SSDs, are designed to be relatively homogeneous regions characterised by identifiable social and economic units within the region, under the unifying influence of one or more major towns or cities. The Brisbane Statistical Division comprises the Cities of Brisbane, Ipswich, Logan and Redcliffe, the Shires of Pine Rivers and Redland and parts of the Shires of Albert, Beaudesert, Caboolture, and Moreton.
- Statistical districts* have been defined around selected urban areas to provide comparable statistics over a period of time. These districts, which are intended to contain the anticipated urban spread for at least 20 years, are generally defined as having a population of 25,000 or more and experiencing urban growth beyond the LGA boundaries.
- NOTE: In accordance with ASGC Edition 2.4, as applicable from 1 July 1994, recent changes in LGAs in Queensland have been reflected in Tables 7, 9 and 11 in this publication (and in related time series tabulations - see pages 33, 34) as follows:
- amalgamation of Gympie (C) and Widgee (S) to form Cooloola (S);
  - transfer of part of Woocoo (S) to Maryborough (C);
  - enlargement of Bundaberg (C) by the addition of parts of Gooburrum (S) and Woongarra (S); and amalgamation of the remaining (major) parts of Gooburrum (S) and Woongarra (S) to form Burnett (S);
  - amalgamation of Allora (S), Glengallan (S), Rosenthal (S) and Warwick (C) to form Warwick (S);
  - enlargement of Mackay (C) by the addition of Pioneer (S);
  - boundary changes in Burdekin (S), Dalrymple (S), Hinchinbrook (S), Thuringowa (C) and Townsville (C).
- For more detailed information, refer to the ASGC (1216.0).
- UNPUBLISHED STATISTICS**
- 23** The ABS may make available on request certain unpublished tourist accommodation statistics. In particular, small geographical area and other tabulations are available for various accommodation types in a time series format. A charge may be made for this information.
- RELATED PUBLICATIONS**
- 24** Publications for Australia and each State and Territory are released by the respective offices of the ABS. Tourist accommodation statistics for past quarters are available on request. Other ABS publications which may be of interest include:
- Directory of Tourism Statistics* (1130.0) (irregular; first and latest issue: 1991)
- Overseas Arrivals and Departures, Australia* (3401.0) (monthly)
- Tourism Indicators Australia* (8634.0) (quarterly)
- Tourist Accommodation, Australia* (8635.0) (quarterly)
- 25** Current publications produced by the ABS are listed in the *Catalogue of Publications and Products* (1101.0). The ABS also issues the *Publications Advice* (1105.0) on Tuesdays and Fridays which lists publications to be released in the next few days. Both the *Catalogue* and *Publications Advice* are available from any ABS office.

EXPLANATORY NOTES—*continued*

\*\*\*\*\*

SYMBOLS AND  
OTHER USAGES

n.p.	not available for publication but included in totals where applicable
..	not applicable
—	nil or rounded to zero
(C)	City
(S)	Shire
(T)	Town

**26** Where figures have been rounded, discrepancies may occur between totals and the sums of the component items.

313 Adelaide Street  
BRISBANE Q 4000  
23 March 1995

**R. A. CROCKETT**  
Deputy Commonwealth Statistician

\*\*\*\*\*

## TOURIST ACCOMMODATION, QUEENSLAND: TIME SERIES STATISTICS AVAILABLE

*****									
Brisbane Statistical Division	HM	HU	CP	VH	Darling Downs Statistical Division	HM	CP	VH	
Albert (S) - Part A (a)			CP		Chinchilla (S)	HM			
Brisbane City (SSD)	HM	HU	CP		Dalby (T)	HM			
Brisbane City (SSD)	Hotels				Goondiwindi (T)	HM	CP		
Brisbane City (SSD)	Motels				Inglewood (S)	HM	CP		
Ascot	HM				Jondaryan (S)	HM			
Aspley	HM		CP		Murilla (S)	HM	CP		
Brisbane City Core (b)	HM	HU			Stanthorpe (S)	HM	CP		
City - Inner	HM				Taroom (S)	HM			
City - Remainder	HM				Toowoomba (C)	HM	CP		
Kangaroo Point	HM				Warwick (S) (c)	HM	CP		
Spring Hill	HM	HU							
Brisbane City Core (b)					South-West Statistical Division	HM	CP		
- establishments with more than 50 rooms	IIM				Balonne (S)	HM			
Brisbane City Core (b)	Hotels				Murweh (S)	HM	CP		
Brisbane City Core (b)	Motels				Paroo (S)	HM			
Eight Mile Plains			CP		Roma (T)	HM	CP		
Hamilton	HM								
Caboolture (S) - Part A (a)			CP		Fitzroy Statistical Division	HM	HU	CP	
Ipswich (C)	HM		CP		Banana (S)			CP	
Logan City (SSD)	IIM		CP		Banana (S), Fitzroy (S) and Mt Morgan (S)	HM			
Redcliffe City (SSD)	HM		CP		Bauhinia (S)	HM			
Redland Shire (SSD)	HM		CP		Calliope (S) - Parts A and B	IIM	CP		
North Stradbroke and Coochiemudlo Islands		HU			Duaringa (S)	HM			
					Emerald (S)	IIM	CP		
Moreton Statistical Division	HM	HU	CP	VH	Gladstone (C)	HM	CP		
Albert (S) - Part B (a)			CP		Livingstone (S)	HM	CP		
Boonah (S)	HM				Rockhampton (C)	HM	CP		
Caboolture (S) - Part B (a)			CP		Rockhampton (C)	Hotels			
Caloundra (C) - Parts A and B	HM	HU	CP		Rockhampton (C)	Motels			
Esk (S)	HM		CP						
Gatton (S)			CP		Central-West Statistical Division	HM	CP		
Gold Coast City (SSD)	HM	HU	CP	VH	Barcardine (S)	HM			
Gold Coast City (SSD)	Hotels				Longreach (S)	IIM			
Gold Coast City (SSD)	Motels								
Biggera Waters		HU			Mackay Statistical Division	HM	HU	CP	VH
Bilinga	IIM				Belyando (S)	HM			
Broadbeach		HU			Broadsound (S)			CP	
Burleigh Heads	HM	HU			Mackay (C) - Parts A and B (c)	HM	CP		
Coolangatta	HM	HU			Mirani (S)			CP	
Coombah			CP		Sarina (S)	HM	CP		
Currumbin		HU			Whitsunday (S)	HM	HU	CP	VH
Labrador	HM	HU	CP						
Main Beach-Broadwater		HU			Northern Statistical Division	HM	HU	CP	VH
Mermaid Beach	IIM	HU			Bowen (S)	HM	CP		
Miami	HM	HU			Bordekin (S) (c)	HM	CP		
Palm Beach	HM	HU			Charters Towers (C)	HM			
Southport	HM				Dalrymple (S) (c)			CP	
Surfers Paradise	IIM	IU			Hinchinbrook (S) (c)			CP	
Tugun		IU			Townsville (C) - Parts A and B (c)	HM	HU	CP	
Gold Coast City (SSD) by establishment size					City	HM			
(number of rooms) - 1-9, 10-15,					Hermit Park	HM			
16-25, 26-50, 51-100, 101 & over	HM				Magnetic Island		HU		VH
Maroochy (S) - Parts A and B	HM	HU	CP		North Ward-Castle Hill	HM	HU		
Noosa (S) - Parts A and B	HM	HU	CP		Rosslea	HM			
Wide Bay-Burnett Statistical Division	HM	HU	CP	VH					
Bundaberg (C) (c)	HM		CP						
Burnett (S) - Parts A and B (c)	HM	HU	CP						
Cooloola (S) (c)	HM		CP						
Hervey Bay (C)	HM	IU	CP						
Isis (S)	HM		CP						
Kingaroy (S)	HM								
Kolan (S)	HM								
Maryborough (C)	HM		CP						
Miriam Vale (S)	HM		CP						
Nanango (S)	IIM		CP						

**TOURIST ACCOMMODATION, QUEENSLAND: TIME SERIES STATISTICS AVAILABLE—continued**

\*\*\*\*\*

	HM	HU	CP	VH			
Far North Statistical Division	HM	HU	CP	VH	Other geographic aggregations		
Atherton (S)	HM				Albert (S) (a)	HM	CP
Atherton (S), Cardwell (S), Douglas (S), Eacham (S), Johnstone (S) and Mulgrave (S)	HM				Beaudesert (S) (a)	HM	CP
Atherton (S) and Eacham (S)	HM		CP		Caboolture (S) (a)	HM	CP
Atherton (S), Eacham (S), Herberton (S) and Mareeba (S)	Hotels				Sunshine Coast Statistical District (d)	HM	HU CP
Atherton (S), Eacham (S), Herberton (S) and Mareeba (S)	Motels				Sunshine Coast Statistical District (d)	Hotels	
Cairns (C)	HM	HU	CP	VH	Sunshine Coast Statistical District (d)	Motels	
Cairns (C)	Hotels				Great Barrier Reef islands (e)	HM	
Cairns (C)	Motels				Mackay (C) and Whitsunday (S) (c)	HM	
Cardwell (S)	HM		CP		Balance	HM	
Douglas (S)	HM	HU	CP	VH	Queensland regions by star grading		
Eacham (S)	HM				Brisbane City (SSD)		
Etheridge (S)			CP		1-2 and ungraded, 3, 4, 5	HM	
Herberton (S)	HM		CP		Brisbane Statistical Division		
Johnstone (S)	HM		CP		1-2, 3, 4, 5, Ungraded	HM	
Mareeba (S)	HM		CP		Gold Coast City (SSD)		
Mulgrave (S) - Parts A and B	HM	HU	CP		1-2, 3, 4-5, Ungraded	HM	
Mulgrave (S) - Parts A and B	Hotels				Sunshine Coast Statistical District (d)		
Mulgrave (S) - Parts A and B	Motels				1-2, 3, 4-5, Ungraded	HM	
North-West Statistical Division	HM		CP		Bundaberg (C), Hervey Bay (C), Isis (S), Maryborough (C) and Burnett (S) (c)		
Carpentaria (S)	HM				1-2, 3-4, Ungraded	HM	
Cloncurry (S)	HM				Stanthorpe (S), Toowoomba (C) and Warwick (S) (c)		
Flinders (S)	HM				1-2, 3-4, Ungraded	HM	
Mount Isa (C)	HM		CP		Calliope (S) and Gladstone (C)		
					1-2, 3-4 & Ungraded	HM	
Total Queensland	HM	HU	CP	VH	Livingstone (S) and Rockhampton (C)		
By establishment size (number of rooms)					1-2, 3-4 & Ungraded	HM	
1-9, 10-15, 16-25, 26-50, 51-100, 101 & over	HM				Mackay (C) and Whitsunday (S) (c)		
By star grading					1-2, 3-5, Ungraded	HM	
1, 2, 3, 4, 5, Ungraded	HM				Townsville (C)		
Total Queensland	Hotels				1-2 and ungraded, 3-5	HM	
Total Queensland	Motels				Atherton (S), Cardwell (S), Douglas (S), Eacham (S), Johnstone (S) and Mulgrave (S)		
					1-2, 3, 4-5, Ungraded	HM	
					Cairns (C)		
					1-2, 3, 4-5, Ungraded	HM	

NOTE: Establishment type codes are used above to denote the following:  
 HM - Licensed hotels, motels and guest houses with facilities  
 Hotels - Licensed hotels with facilities  
 Motels - Motels and guest houses with facilities  
 HU - Holiday flats, units and houses  
 CP - Caravan parks (total short-term and long-term)  
 VH - Visitor hostels

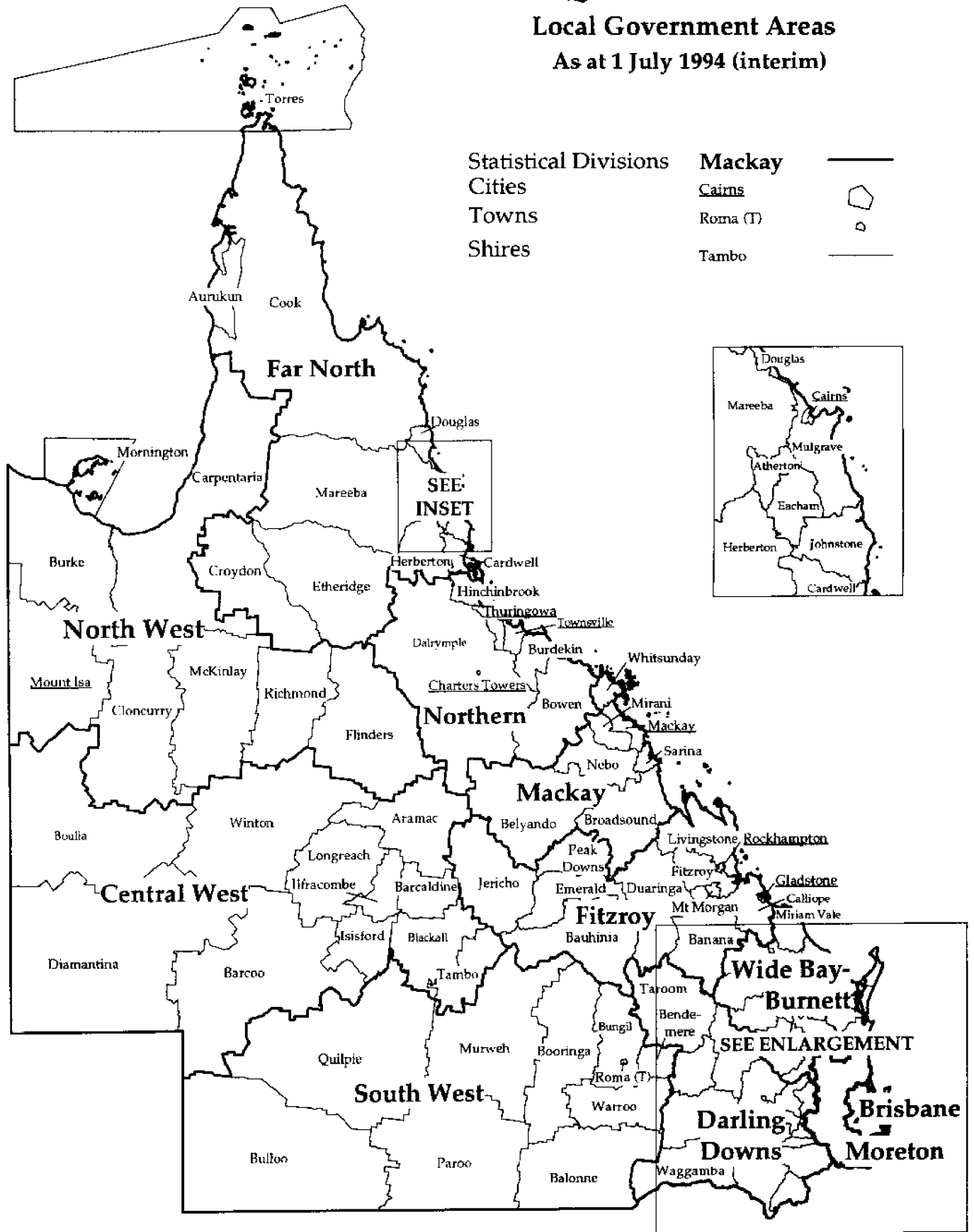
(a) Albert, Beaudesert, Caboolture and Moreton Shires straddle the boundary line between Brisbane and Moreton Statistical Divisions. (b) Brisbane City Core comprises the suburbs of Bowen Hills, City, Dutton Park, Fortitude Valley, Herston, Highgate Hill, Kangaroo Point, Kelvin Grove, Milton, New Farm, Newstead, Paddington, Red Hill, South Brisbane, Spring Hill, West End and Woollongabba. (c) See page 31, Explanatory Note 22 for details of boundary changes effective from 1 July 1994. (d) Sunshine Coast Statistical District comprises the more urban coastal portions of Caloundra City and Maroochy and Noosa Shires. (e) Great Barrier Reef island establishments are those on coastal islands from Lady Elliot in the south to Lizard in the north.

\*\*\*\*\*

# QUEENSLAND

## Local Government Areas

As at 1 July 1994 (interim)



# SOUTH-EASTERN QUEENSLAND

## Local Government Areas

As at 1 July 1994 (interim)

Statistical Divisions

Cities

Towns

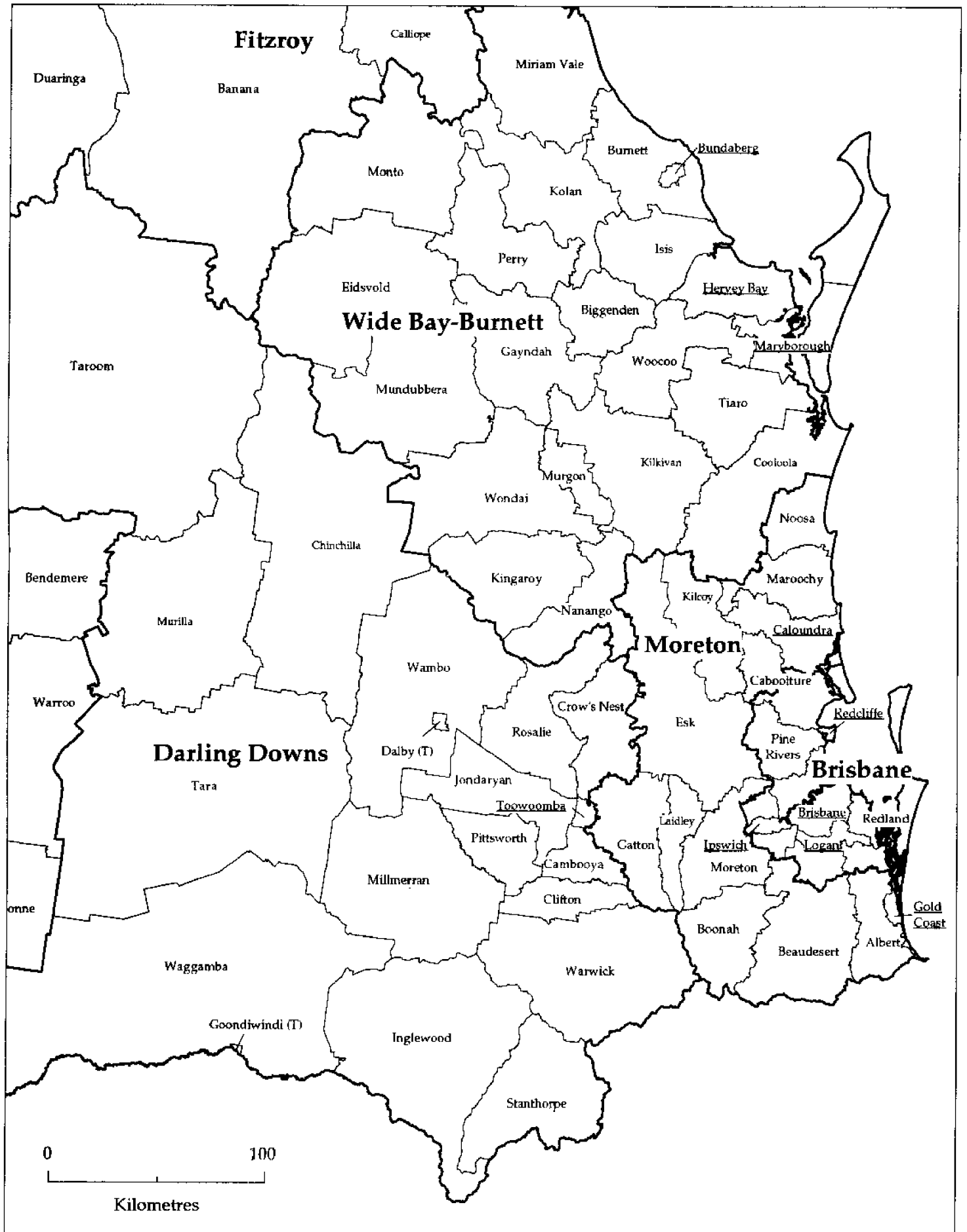
Shires

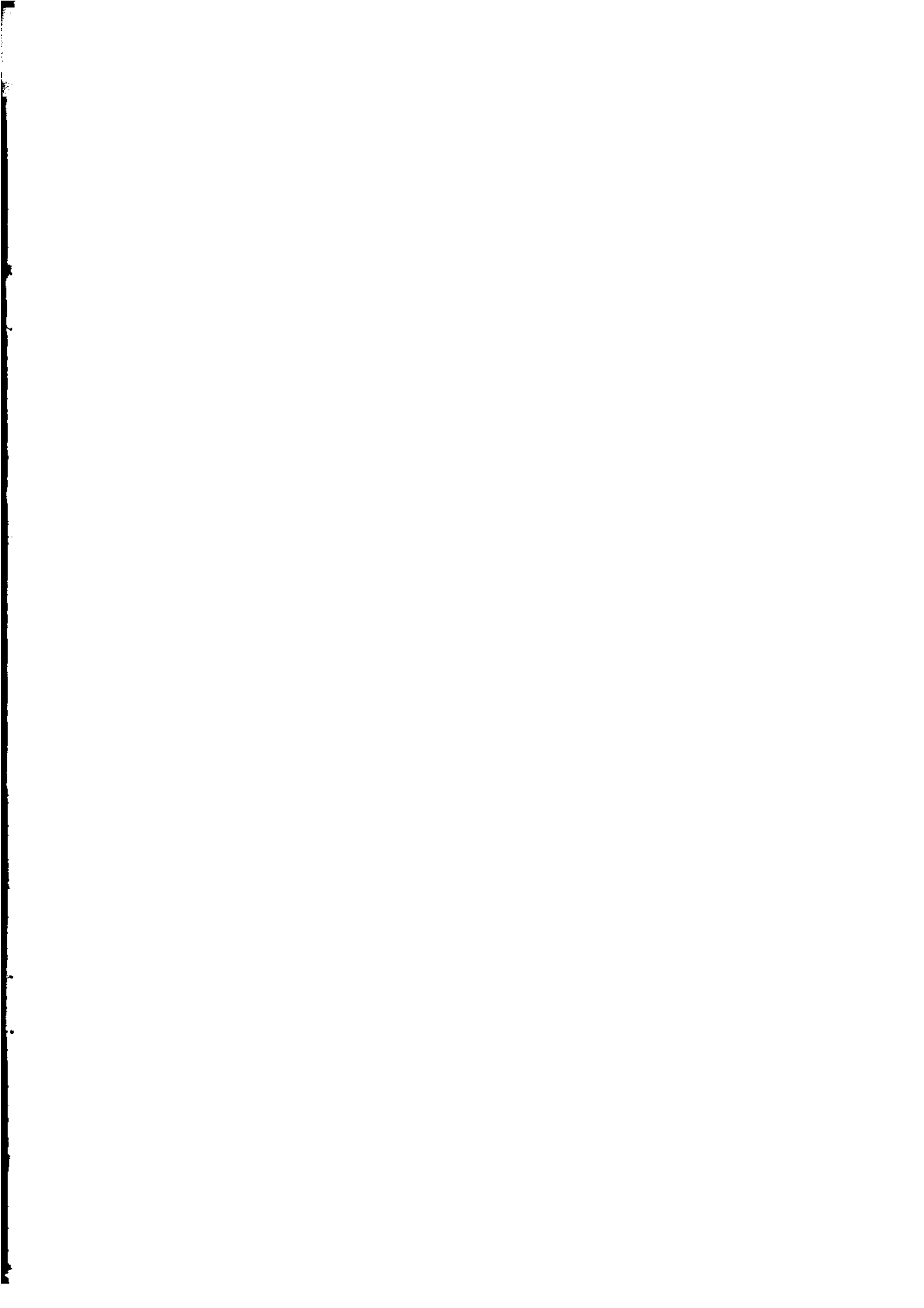
**Moreton**

Redcliffe

Dalby

Wondai





The ABS publishes a wide range of information on Australia's economic and social conditions. A catalogue of publications and products is available from any of our offices (see below).

#### INFORMATION CONSULTANCY SERVICES

Special tables or in-depth data investigations are provided by the ABS Information Consultancy Service in each of our offices (see below).

#### ELECTRONIC DATA SERVICES

A large range of data is available via on-line services, diskette, magnetic tape, tape cartridge and CD ROM. For more details about our electronic data services, contact any ABS office (see below).

#### BOOKSHOP AND SUBSCRIPTIONS

There is a large number of ABS publications available from the ABS Bookshops in each of our offices. You can also receive any of our publications on a regular basis. Join our subscription mailing service and have your publications mailed to you in Australia at no additional cost. Telephone our Publications Subscription Service toll free Australia wide on 008 0206 08.

#### ABS EMAIL ADDRESSES

Keylink STAT.INFO/ABS

X.400

(C:AU,A:TELMEMO,O:ABS,SN:INFO,FN:STAT)

Internet STAT.INFO@ABS. TELEMEMO.AU

#### GENERAL SALES AND INQUIRIES

- Sydney 02 268 4611      • Adelaide 08 237 7100
- Melbourne 03 615 7000      • Hobart 002 20 5800
- Brisbane 07 222 6351      • Darwin 089 43 2111
- Perth 09 360 5140      • Canberra 06 252 6007

- Information Services, ABS  
PO Box 10, Belconnen ACT 2616

